



**Part Number :** [39012101](#)

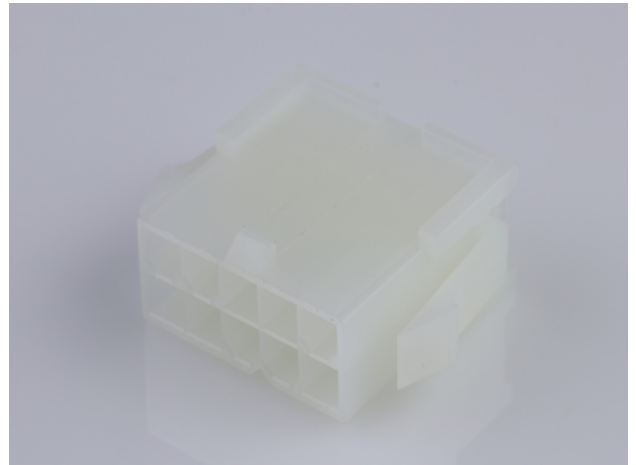
**Product Description :** Mini-Fit Jr. Plug Housing, Dual Row, 10 Circuits, UL 94V-2, with Panel Mounting Ears, Natural

**Series Number :** 5559

**Status :** Active

**Product Category :** Connector Housings

**Engineering Number :** 5559-10P



---

## Documents & Resources

### Drawings

[039012101\\_sd.pdf](#)

### 3D Models and Design Files

[039012101\\_stp.zip](#)

### Specifications

[55560001-AS-000.pdf](#)

[AS-5557-001-001.pdf](#)

[PK-5559-001-001.pdf](#)

[PS-45750-001-001.pdf](#)


[PS-5556-001-001.pdf](#)

[55560010-TS-000.pdf](#)

---

## Product Environment Compliance

### Compliance

GADSL/IMDS	Not Relevant
China RoHS	
EU ELV	Not Relevant
Low-Halogen Status	Low-Halogen per IEC 61249-2-21
REACH SVHC	Not Contained per D(2024)4144-DC (27 June 2024)
EU RoHS	Compliant per EU 2015/863

[Multiple Part Product Compliance Statements](#)

- Eu RoHS
- REACH SVHC
- Low-Halogen

Multiple Part Industry Compliance Documents

- IPC 1752A Class C
- IPC 1752A Class D
- Molex Product Compliance Declaration
- IEC-62474
- chemSHERPA (xml)

EU RoHS Certificate of Compliance

---

**Part Details**

**General**

Status	Active
Category	Connector Housings
Series	5559
Description	Mini-Fit Jr. Plug Housing, Dual Row, 10 Circuits, UL 94V-2, with Panel Mounting Ears, Natural
Application	Power, Wire-to-Board, Wire-to-Wire
Comments	Current = 13A max. per circuit when header is mated to a receptacle loaded with 45750 series terminals crimped to 16 AWG wire. See Molex product specification PS-45750-001 for additional current derating information.
Product Name	Mini-Fit Jr.
UPC	800753584372

**Agency**

CSA	LR19980
UL	E29179

**Physical**

Breakaway	No
Circuits (maximum)	10
Color - Resin	Natural

Flammability	94V-2
Gender	Plug
Glow-Wire Capable	No
Material - Resin	Nylon
Net Weight	3.263/g
Number of Rows	2
Packaging Type	Bag
Panel Mount	Yes
Pitch - Mating Interface	4.20mm
Pitch - Termination Interface	4.20mm
Polarized to Mating Part	Yes
Stackable	No
Temperature Range - Operating	-40° to +105°C

---

## Mates With / Use With

### Mates with Part(s)

Description	Part Number
Mini-Fit Jr. Receptacle Housings	<u>5557</u>
Mini-Fit Jr.-to-Mini-Fit Jr. Off-the-Shelf (OTS) Overmolded Cable Assemblies	<u>245135</u>

### Use with Part(s)

Description	Part Number
Pre-Crimped Lead Mini-Fit Male-to-Mini-Fit Male, Tin (Sn) Plating, 150.00mm Length, 18 AWG, Red	<u>797580005</u>
Pre-Crimped Lead Mini-Fit Male-to-Mini-Fit Male, Tin (Sn) Plating, 300.00mm Length, 18 AWG, Red	<u>797580013</u>
Mini-Fit Male Crimp Terminals	<u>5558</u>
Mini-Fit Plus Male Crimp Terminals	<u>46012</u>
Mini-Fit Jr. Crimp Grounding Terminals	<u>30490</u>