



Part Number : [39012240](#)

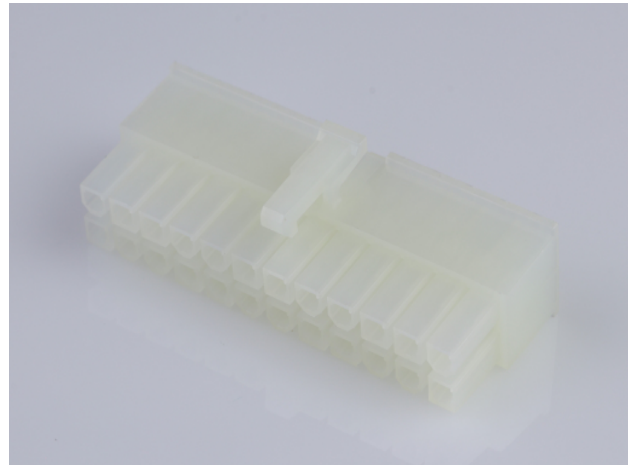
Product Description : Mini-Fit Jr. Receptacle Housing, Dual Row, 24 Circuits, UL 94V-2, Natural

Series Number : 5557

Status : Active

Product Category : Connector Housings

Engineering Number : 5557-24R



Documents & Resources

Drawings

[039012240_sd.pdf](#)

[PK-5557-002-000.pdf](#)

3D Models and Design Files

[039012240_stp.zip](#)

Specifications

[55560001-AS-000.pdf](#)

[AS-5557-001-001.pdf](#)

[PS-45750-001-001.pdf](#)

[55560002-PS-CH-000.pdf](#)

[55560002-PS-ES-000.pdf](#)

[55560002-PS-SK-000.pdf](#)

[PS-5556-001-001.pdf](#)


[PS-5556-002-001.pdf](#)

[55560010-TS-000.pdf](#)

[TS-5556-002-001.pdf](#)

Product Environment Compliance

Compliance

| | |
|--------------------|---|
| GADSL/IMDS | Not Relevant |
| China RoHS |  |
| EU ELV | Compliant per 2000/53/EC |
| Low-Halogen Status | Low-Halogen per IEC 61249-2-21 |

| | |
|------------|--|
| REACH SVHC | Not Contained per D(2024)4144-DC (27 June 2024) |
| EU RoHS | Compliant per EU 2015/863 |

Multiple Part Product Compliance Statements

- Eu RoHS
- REACH SVHC
- Low-Halogen

Multiple Part Industry Compliance Documents

- IPC 1752A Class C
- IPC 1752A Class D
- Molex Product Compliance Declaration
- IEC-62474
- chemSHERPA (xml)

EU RoHS Certificate of Compliance

Part Details

General

| | |
|--------------|---|
| Status | Active |
| Category | Connector Housings |
| Series | 5557 |
| Description | Mini-Fit Jr. Receptacle Housing, Dual Row, 24 Circuits, UL 94V-2, Natural |
| Application | Power, Wire-to-Board, Wire-to-Wire |
| Comments | Current = 13A max. per circuit when header is mated to a receptacle loaded with 45750 series terminals crimped to 16 AWG wire. See Molex product specification PS-45750-001 for additional current derating information. |
| Product Name | Mini-Fit Jr. |
| UPC | 800753584051 |

Agency

| | |
|-----|---------|
| CSA | LR19980 |
| UL | E29179 |

Physical

| | |
|-------------------------------|----------------|
| Breakaway | No |
| Circuits (maximum) | 24 |
| Color - Resin | Natural |
| Flammability | 94V-2 |
| Gender | Receptacle |
| Glow-Wire Capable | No |
| Material - Resin | Nylon |
| Net Weight | 4701.100/mg |
| Number of Rows | 2 |
| Packaging Type | Bag |
| Panel Mount | No |
| Pitch - Mating Interface | 4.20mm |
| Pitch - Termination Interface | 4.20mm |
| Polarized to Mating Part | Yes |
| Stackable | No |
| Temperature Range - Operating | -40° to +105°C |

Solder Process Data

| | |
|------------------------------|-----|
| Lead-Free Process Capability | N/A |
|------------------------------|-----|

Mates With / Use With

Mates with Part(s)

| Description | Part Number |
|---|--------------|
| Mini-Fit BMI Right-Angle Dual Row Headers | <u>42404</u> |
| Mini-Fit BMI Vertical Dual Row Headers | <u>42440</u> |
| Mini-Fit BMI Right-Angle Dual Row Headers | <u>43810</u> |
| Mini-Fit BMI Vertical Dual Row Headers | <u>44068</u> |
| Mini-Fit Jr. Dual Row Test Plugs | <u>44281</u> |
| Mini-Fit Jr. Plug Housings | <u>5559</u> |
| Mini-Fit Jr. Vertical Headers | <u>5566</u> |
| Mini-Fit Jr. Right-Angle Headers | <u>5569</u> |

| | |
|-------------------------------|--------------|
| Mini-Fit Jr. Dual Row Headers | <u>87427</u> |
|-------------------------------|--------------|

Use with Part(s)

| Description | Part Number |
|---|------------------|
| Pre-Crimped Lead Mini-Fit Female-to-Mini-Fit Female, Tin (Sn) Plating, 150.00mm Length, 18 AWG, Red | <u>797580001</u> |
| Pre-Crimped Lead Mini-Fit Female-to-Mini-Fit Female, Tin (Sn) Plating, 300.00mm Length, 18 AWG, Red | <u>797580009</u> |
| Mini-Fit Female Crimp Terminals | <u>5556</u> |
| Mini-Fit Plus Female Crimp Terminals | <u>45750</u> |