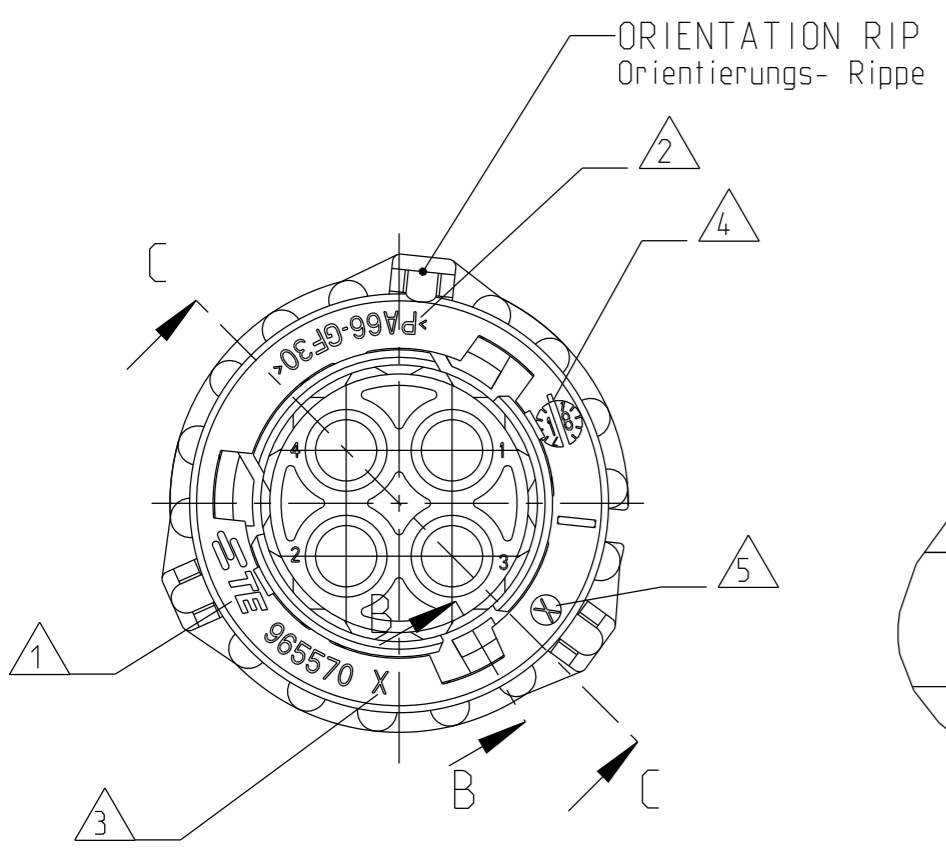


LOC	DIST	REVISIONS ÄNDERUNGEN			
P	LTR	DESCRIPTION BESCHREIBUNG	DATE	DWN	APVD
AI	-				
PROJEKT NR.: 92-52069		E3	REVISED PER PCN :E-19-015876	11OCT2019	NS JG
		E4	REVISED PER PCN :E-21-100265	25JAN2021	PN JG
		F	REVISED PER PCN :E-22-143834	06JUN2022	HH AW
		F1	REVISED PER PCN :E-24-220073	30AUG2024	RK AW

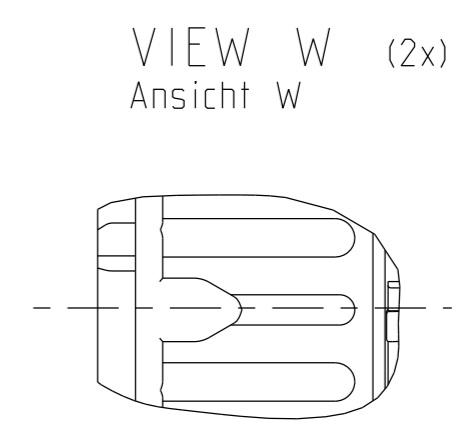
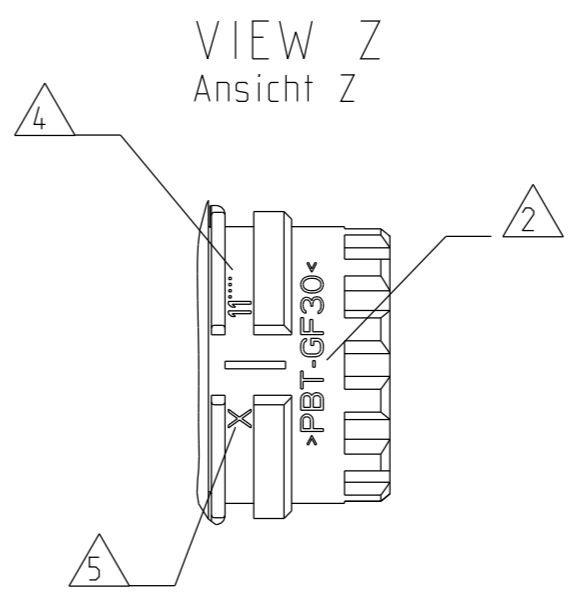
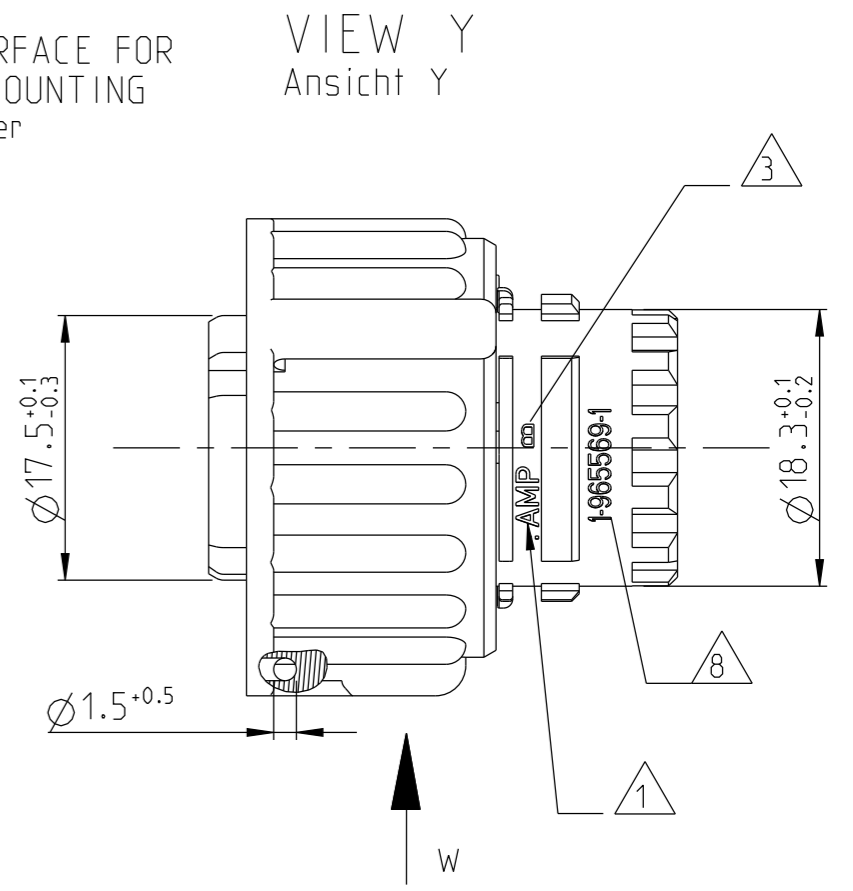
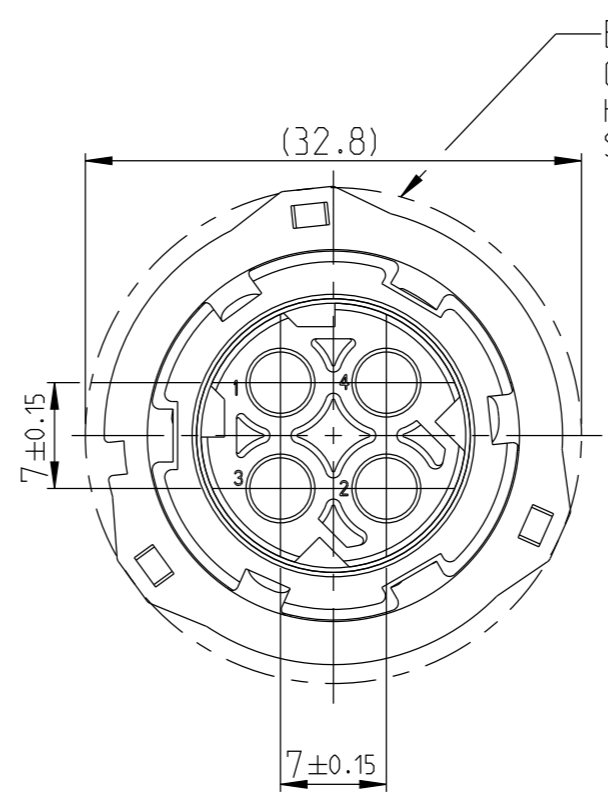
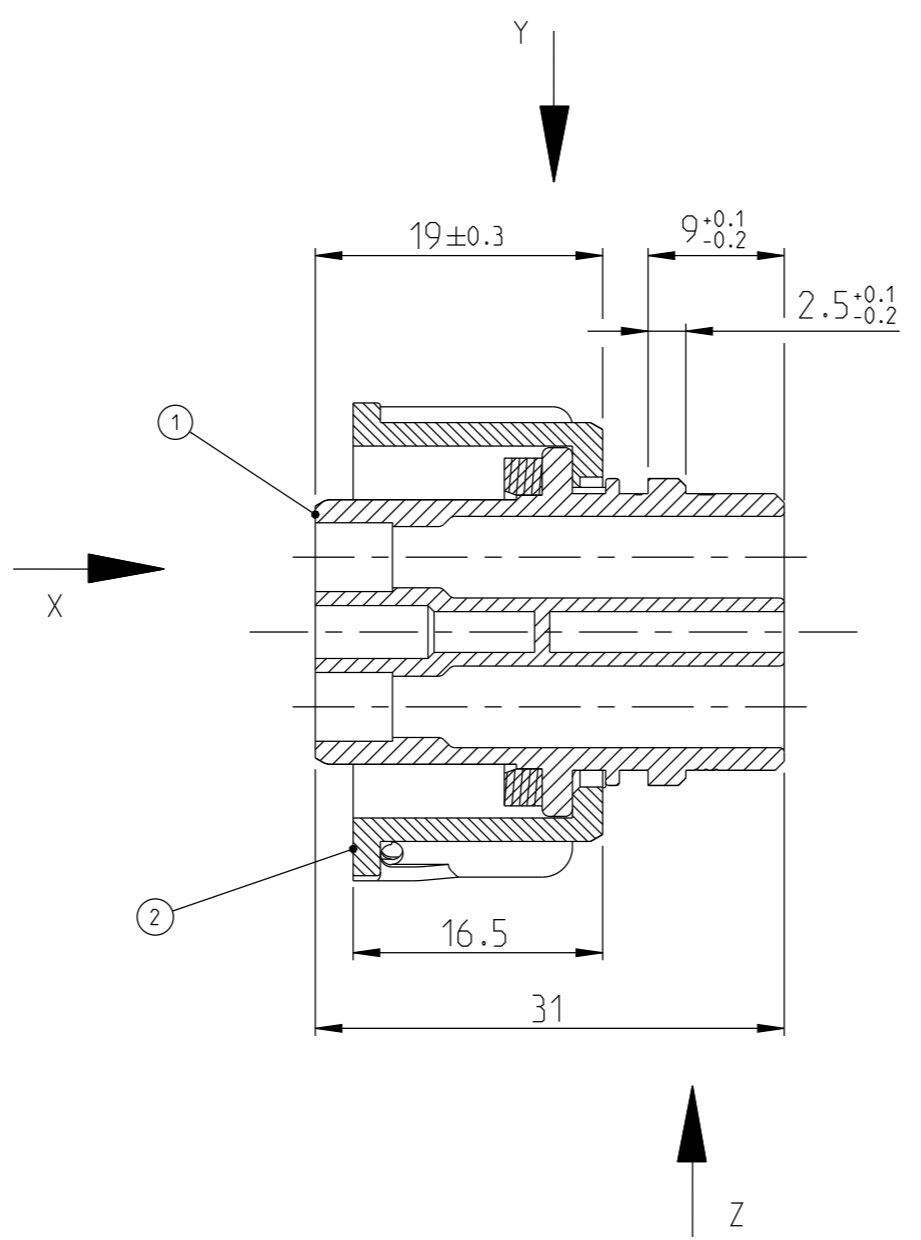
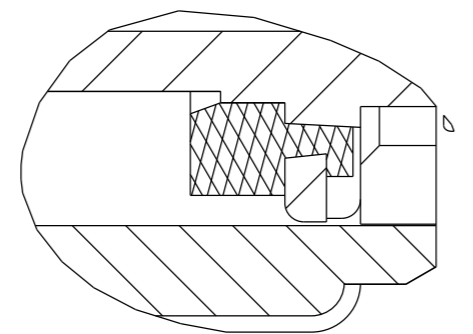
SECTION C-C
Schnitt C-C

VIEW X
45° ROTATED (CLOCKWISE)
Ansicht X
45° gedreht (im Uhrzeigersinn)

-COUPLING-RING IN PRE-LOCKED POSITION
(FITTING POSITION WITH PIN HOUSING)
-Kupplungsring in Vorraststellung
(Fuegeposition mit Stiftgehäuse)



SECTION B-B
SCALE 5:1
Schnitt B-B
M 5:1



- NOTES
Bemerkungen
- 1 AMP-LOGO OR TE-LOGO
AMP-Logo oder TE-Logo und
 - 2 MATERIAL MARKING
Werkstoffkennzeichnung
 - 3 REVISION OF THE MOULD
Werkzeugaenderungindex
 - 4 PRODUCTION DATE
Produktionsdatum
 - 5 CAVITY MARKING
Nestmarkierung
 - 6 FITS TO CONNECTORS ACC. TO
DIN 72585/ISO 15170 FORM A AND B AND
PIN-HOUSING 2-4POS. TE-PN 967402
Passend zu Steckverbindern nach
DIN 72585/ISO 15170 Form A und B und
Stiftgehäuse 2-4pol. TE-PN 967402
 - 7 FOR SUITABLE CONTACTS AND SEALS
SEE DRAWING:
Zu verwendende Kontakte und
Einzeldichtungen siehe
Tabellenzeichnung:
TE 1355065
 - 8 MOLDED HOUSING SUBASSEMBLY PN
Teilnummer der Gehäusebaugruppe

REV.	CONNECTOR ORDER NR. Verbind.-Bestell-NR.	USED CONTACT CAVITIES Kontaktbestueckung	1	2	3	4	5	6	7	8	9	10	11	12	13	14	15	16	17	18	19	20	
E	4-967325-3	4-965569-3	X	X	X	X	X	X	X	X	X	X	X	X	X	X	X	X	X	X	X	X	X
E	4-967325-2	4-965569-2	X	X	X	X	X	X	X	X	X	X	X	X	X	X	X	X	X	X	X	X	X
E	4-967325-1	4-965569-1	X	X	X	X	X	X	X	X	X	X	X	X	X	X	X	X	X	X	X	X	X
E	3-967325-3	3-965569-3	X	X	X	X	X	X	X	X	X	X	X	X	X	X	X	X	X	X	X	X	X
E	3-967325-2	3-965569-2	X	X	X	X	X	X	X	X	X	X	X	X	X	X	X	X	X	X	X	X	X
E	3-967325-1	3-965569-1	X	X	X	X	X	X	X	X	X	X	X	X	X	X	X	X	X	X	X	X	X
E	2-967325-3	2-965569-3	X	X	X	X	X	X	X	X	X	X	X	X	X	X	X	X	X	X	X	X	X
E	2-967325-2	2-965569-2	X	X	X	X	X	X	X	X	X	X	X	X	X	X	X	X	X	X	X	X	X
E	2-967325-1	2-965569-1	X	X	X	X	X	X	X	X	X	X	X	X	X	X	X	X	X	X	X	X	X
F	1-967325-3	1-965569-3	X	X	X	X	X	X	X	X	X	X	X	X	X	X	X	X	X	X	X	X	X
F	1-967325-2	1-965569-2	X	X	X	X	X	X	X	X	X	X	X	X	X	X	X	X	X	X	X	X	X
G	1-967325-1	1-965569-1	X	X	X	X	X	X	X	X	X	X	X	X	X	X	X	X	X	X	X	X	X

CODING / COLOUR OF SOCKET HOUSING
Kodierung / Farbe des Buchsengehäuses

QTY.	DESCRIPTION SINGLE PART	MATERIAL	SURFACE/Oberflaeche
Stueck	Beschreibung Einzelteil	WERKSTOFF	COLOUR/Farbe
1	COUPLING RING Kupplungsring	PBT-GF30	BLACK schwarz
1	COUPLING RING Kupplungsring	PA66-GF30	BLACK schwarz
1	SOCKET HOUSING W. SEALING 2POS. Buchsengehäuse m. Dichtung 2pol.	PBT-GF30/SILICONE	SEALING: ORANGE Dichtung: orange
1	SOCKET HOUSING W. SEALING 3POS. Buchsengehäuse m. Dichtung 3pol.	PBT-GF30/SILICONE	SEALING: ORANGE Dichtung: orange
1	SOCKET HOUSING W. SEALING 4POS. Buchsengehäuse m. Dichtung 4pol.	PBT-GF30/SILICONE	SEALING: ORANGE Dichtung: orange

THIS DRAWING IS A CONTROLLED DOCUMENT. DIESE ZEICHNUNG IST EIN KONTROLLIERTES DOKUMENT.		DWN J. GRANZOW 11NOV1994
DIMENSIONS: MASSEINHEITEN: [mm]		CHK J. HASS 15NOV1994
TOLERANCES UNLESS OTHERWISE SPECIFIED: ALLGEMEIN TOLERANZEN ACC. TO ISO 8015		APVD CH. EBERWEIN 15APR2013
0-PLC ±0.2 1-PLC ±0.2 2-PLC ±0.2 3-PLC ±0.2 4-PLC ±0.2		NAME 2.5mm SOCKET CONNECTOR, 2-4POS. 2.5mm Buchsenstecker, 2-4pol.
ANGLES/WINKEL ±0.2 FINISH/OBERFLAECHEN/FARBE		PRODUCT SPEC 108-18621
MATERIAL		APPLICATION SPEC 114-18255
WEIGHT GEWICHT		12.0g
CUSTOMER DRAWING		SCALE MASSSTAB 2:1

CLOSED CAVITY IN THE
2POS. AND 3POS. CONNECTOR
Veschlossene Kammer in der
2pol. und 3pol. Variante



SIZE A2	CAGE CODE 00779	DRAWING NO ZEICHNUNGS-NR. C-967325	RESTRICTED TO NUR FÜR
SHEET BLATT 1		OF VON 2	REV F1

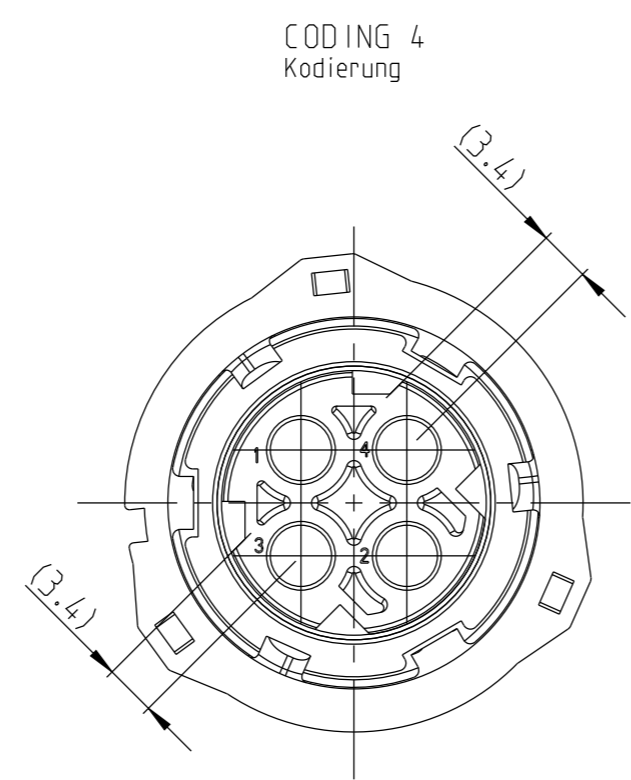
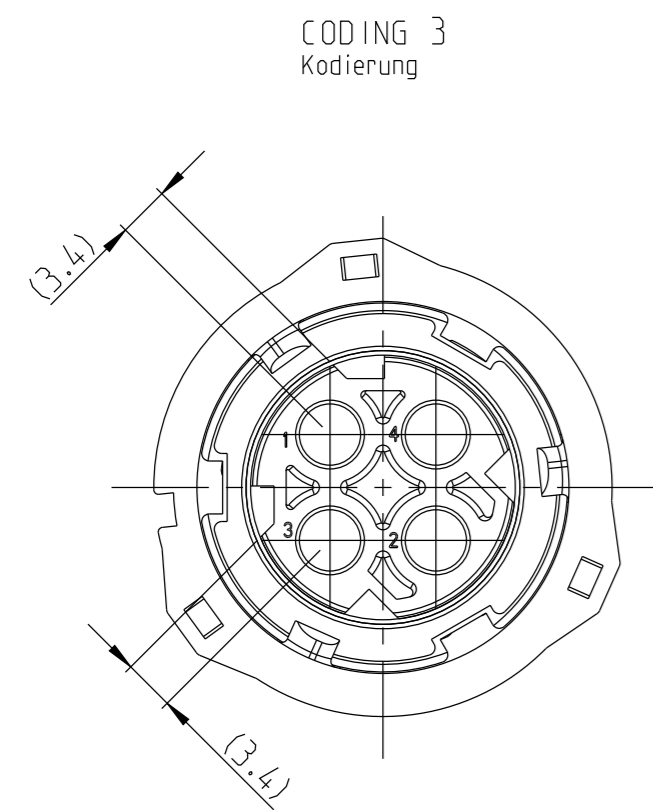
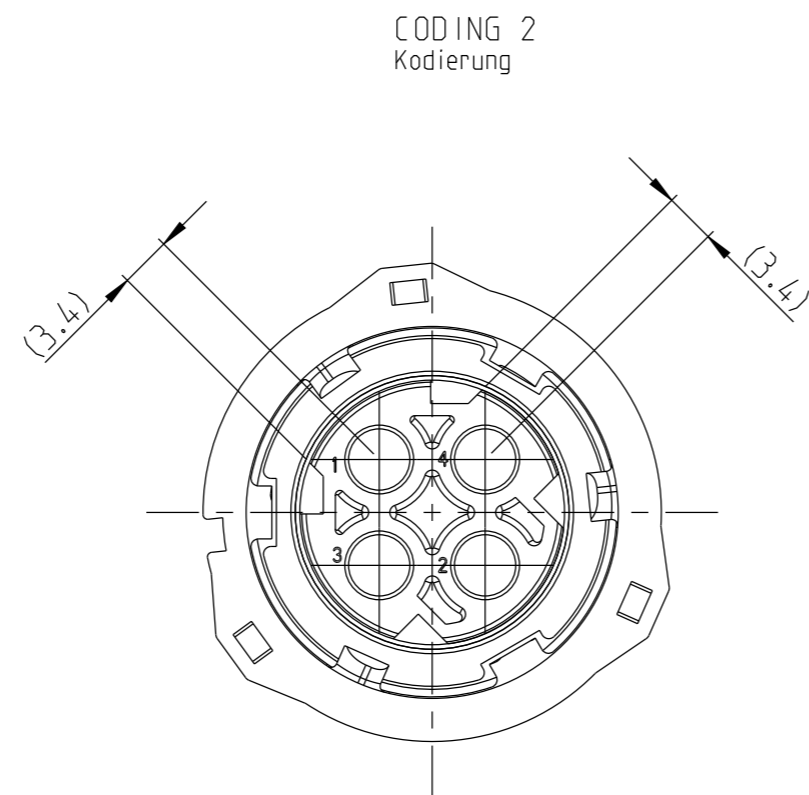
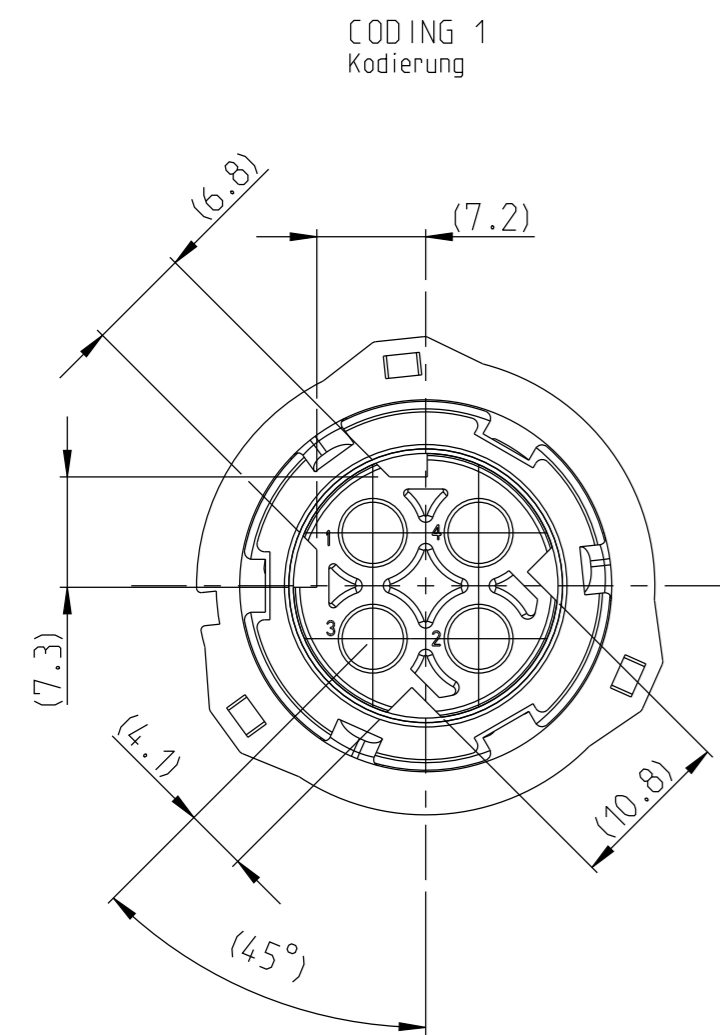
LOC	DIST	REVISIONS					
A1	-	P	LTR	DESCRIPTION	DATE	DWN	APVD
PROJEKT NR.: 92-52069		-	-	SEE SHEET 1	-	-	-

F1 -COUPLING-RING IN PRE-LOCKED POSITION (FITTING POSITION WITH PIN HOUSING)
 -Kupplungsring in Vorraststellung (Fuegeposition mit Stiftgehaeuse)

NOTES
Bemerkungen

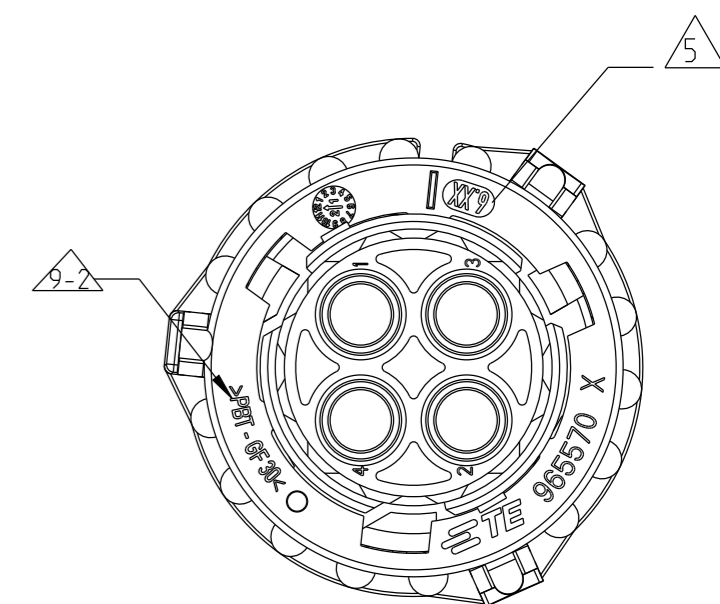
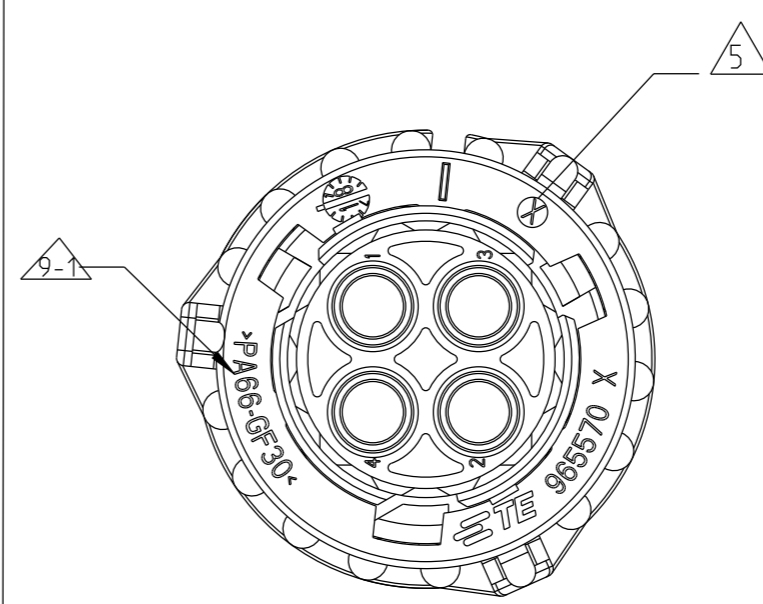
9 DIFFERENT COUPLING RING COMPONENT USED ACCORDING TO ASSEMBLY REGION:

	REGION	COUPLING RING MATERIAL	CAVITY MARKING
9-1	SOUTH AMERICA - BRAZIL	PA66-GF30	X
9-2	EMEA	PBT-GF30	6.XX



ASSEMBLY USING PA66 COUPLING RING

ASSEMBLY USING PBT COUPLING RING



THIS DRAWING IS A CONTROLLED DOCUMENT. DIESE ZEICHNUNG IST EIN KONTROLLIERTES DOKUMENT.		DWN J. GRANZOW 11NOV1994	TE Connectivity	
		CHK J. HASS 15NOV1994		
DIMENSIONS: MASSEINHEITEN: (MM) TOLERANCES UNLESS OTHERWISE SPECIFIED: ALLGEMEINTOLERANZEN ACC. TO ISO 8015		APVD CH. EBERWEIN 15APR2013	NAME 2.5mm SOCKET CONNECTOR, 2-4POS. 2.5mm Buchsenstecker, 2-4pol.	
DIMENSIONS: MASSEINHEITEN: (MM) TOLERANCES UNLESS OTHERWISE SPECIFIED: ALLGEMEINTOLERANZEN ACC. TO ISO 8015 0. PLC ± 1. PLC ± 2. PLC ± ±0.2 3. PLC ± 4. PLC ± ANGLES/WINKEL ±0.2 FINISH/OBERFLAECHE/FARBE		PRODUCT SPEC 108-18621	SIZE A2	
MATERIAL		APPLICATION SPEC 114-18255	CAGE CODE 00779	DRAWING NO. ZEICHNUNGS-NR. C-967325
		WEIGHT GEWICHT 12.0g	SCALE MASSSTAB 2:1	RESTRICTED TO NUR FUER
CUSTOMER DRAWING		/NOV	SHEET BLATT 2	OF VON 2
			REV F1	