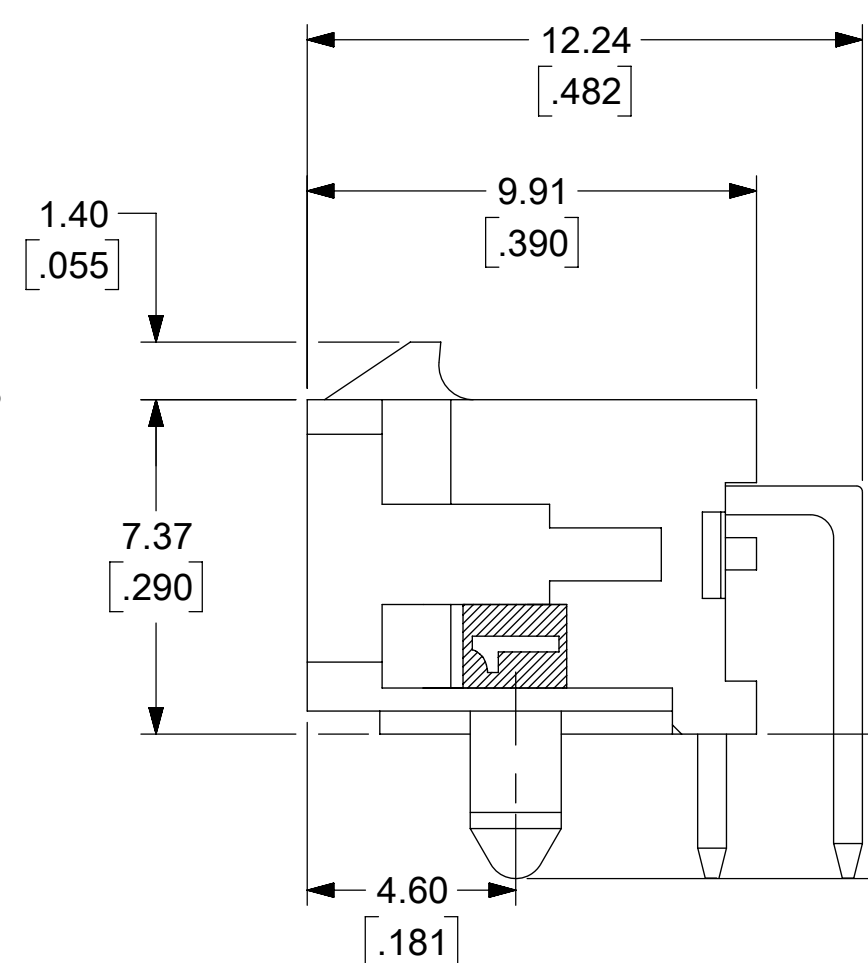
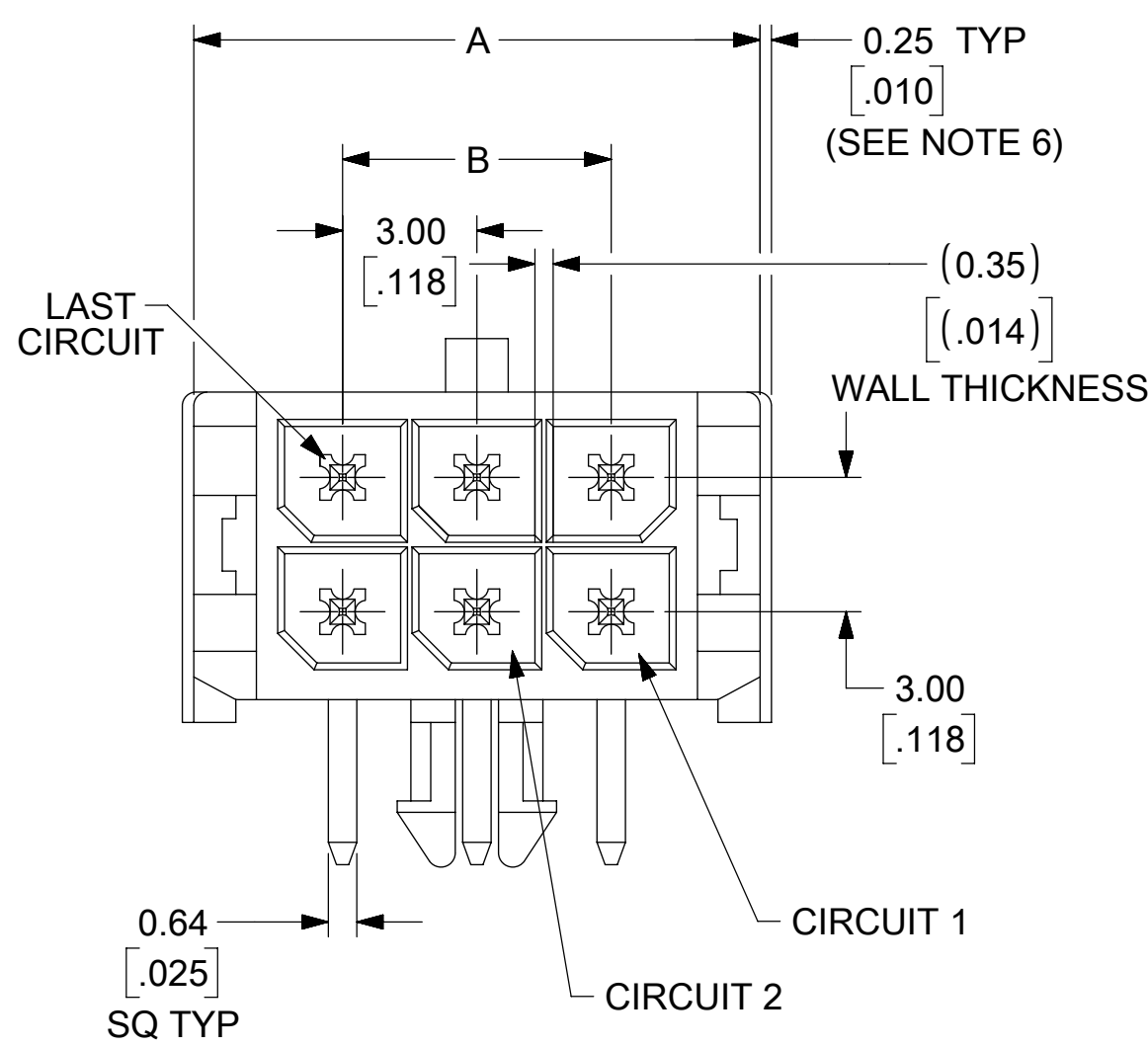
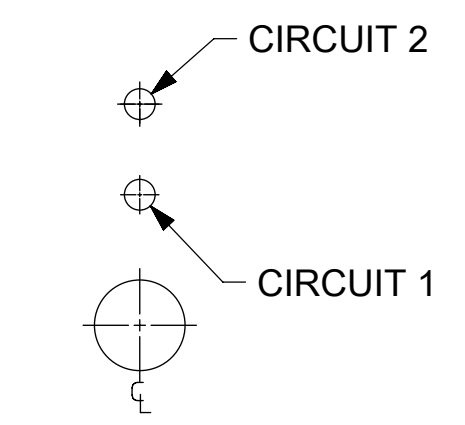
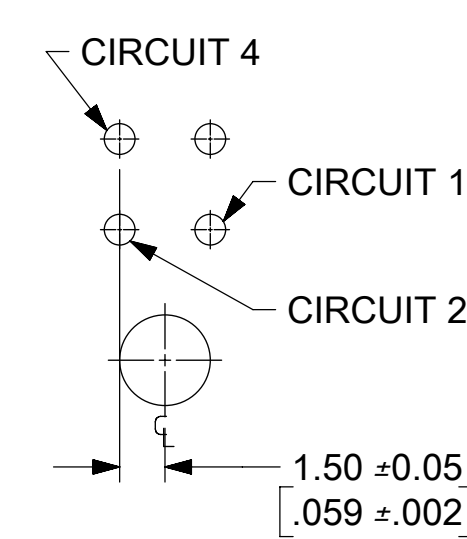
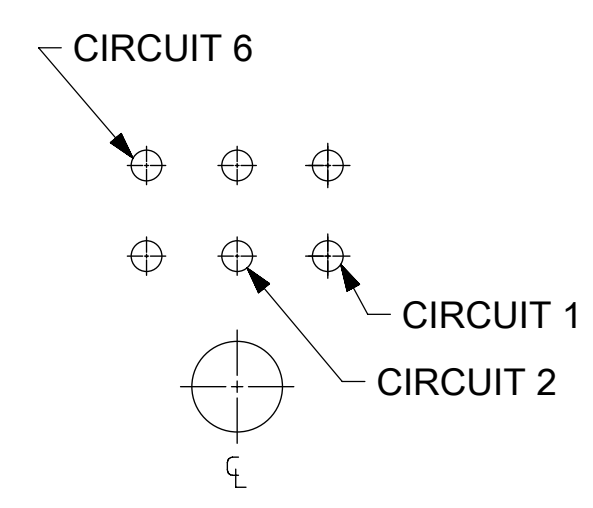


| CKTS | A | B | C |
|------|-------------|-------------|-------------|
| 02 | 6.65/.262 | NA | NA |
| 04 | 9.65/.380 | 3.00/.118 | NA |
| 06 | 12.65/.498 | 6.00/.236 | NA |
| 08 | 15.65/.616 | 9.00/.354 | 4.70/.185 |
| 10 | 18.65/.734 | 12.00/.472 | 7.70/.303 |
| 12 | 21.65/.852 | 15.00/.591 | 10.70/.421 |
| 14 | 24.65/.970 | 18.00/.709 | 13.70/.539 |
| 16 | 27.65/1.088 | 21.00/.827 | 16.70/.539 |
| 18 | 30.65/1.206 | 24.00/.945 | 19.70/.776 |
| 20 | 33.65/1.325 | 27.00/1.063 | 22.70/.894 |
| 22 | 36.65/1.443 | 30.00/1.181 | 25.70/1.012 |
| 24 | 39.65/1.561 | 33.00/1.299 | 28.70/1.130 |



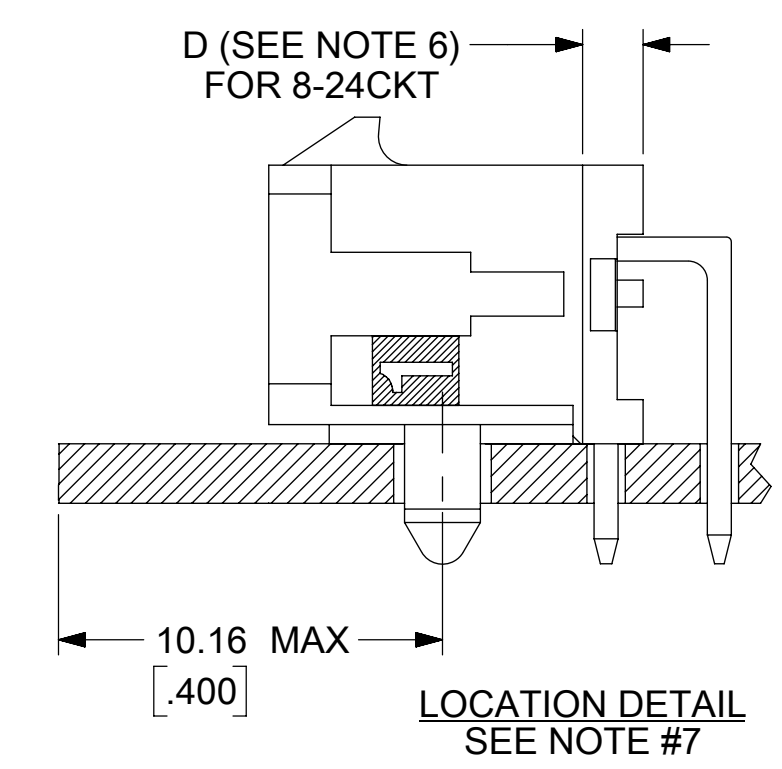
PCB LAYOUT: COMPONENT SIDE
RECOMMEND PCB THICKNESS: 1.57/.062



CIRCUIT "1" IDENTIFIED ON THIS SURFACE
(APPROX. LOCATION SHOWN FOR REF.)

- NOTES:**
- HOUSING MATERIAL: GLASS FILLED LIQUID CRYSTAL POLYMER, UL94V-0, COLOR: BLACK
TERMINAL MATERIAL: BRASS ALLOY
 - FINISH: A = 0.00152/(.000060) MIN. REFLOWED MATTE TIN OVER 0.00127/(.000050) MIN. NICKEL PLATE. (FINISH IS BRIGHT IN APPEARANCE. THICKNESS AS APPLIED PRIOR TO REFLOW)
B = 0.00038/(.000015) MIN. SELECT GOLD IN CONTACT AREA; 0.00254/(.000100) MIN. SELECT MATTE TIN ON SOLDER TAILS; BOTH OVER 0.00127/(.000050) MIN. NICKEL PLATE.
C = 0.00076/(.000030) MIN. SELECT GOLD IN CONTACT AREA; 0.00254/(.000100) MIN. SELECT MATTE TIN ON SOLDER TAILS; BOTH OVER 0.00127/(.000050) MIN. NICKEL PLATE.
D = 0.00254/(.000100) MIN. MATTE TIN OVER 0.00127/(.000050) MIN. NICKEL OVERALL
 - PRODUCT SPECIFICATION: PS-43045
 - TRAY PACKAGED : SEE MOLEX DRAWING PK-70873-0313
 - MATES WITH MICRO FIT (3.0) RECEPTACLE SERIES 43025
 - CIRCUIT SIZES 2-6: "D" IS 6.74/.265 FOR 0.25/.010 STEP.
CIRCUIT SIZES 8-24: "D" IS 1.60/.063 FOR 0.25/.010 STEP.
 - TO AVOID INTERFERENCE BETWEEN RECEPTACLE AND PCB, HEADER MUST BE PLACED WITHIN 10.16/(.400) MAX. FROM EDGE OF PCB, AS SHOWN IN LOCATION DETAIL.
 - THIS PART CONFORMS TO CLASS B REQUIREMENTS OF PRODUCT SPECIFICATION PS-45499-002.

| CKTS | FINISH A | FINISH B | FINISH C | FINISH D |
|------|--------------|--------------|--------------|--------------|
| | MATERIAL NO: | MATERIAL NO: | MATERIAL NO: | MATERIAL NO: |
| 02 | 43045-0200 | 43045-0201 | 43045-0202 | 43045-0310 |
| 04 | 43045-0400 | 43045-0401 | 43045-0402 | 43045-0510 |
| 06 | 43045-0600 | 43045-0601 | 43045-0602 | 43045-0710 |
| 08 | 43045-0800 | 43045-0801 | 43045-0802 | 43045-0910 |
| 10 | 43045-1000 | 43045-1001 | 43045-1002 | 43045-1110 |
| 12 | 43045-1200 | 43045-1201 | 43045-1202 | 43045-1310 |
| 14 | 43045-1400 | 43045-1401 | 43045-1402 | 43045-1510 |
| 16 | 43045-1600 | 43045-1601 | 43045-1602 | 43045-1710 |
| 18 | 43045-1800 | 43045-1801 | 43045-1802 | 43045-1910 |
| 20 | 43045-2000 | 43045-2001 | 43045-2002 | 43045-2110 |
| 22 | 43045-2200 | 43045-2201 | 43045-2202 | 43045-2310 |
| 24 | 43045-2400 | 43045-2401 | 43045-2402 | 43045-2510 |

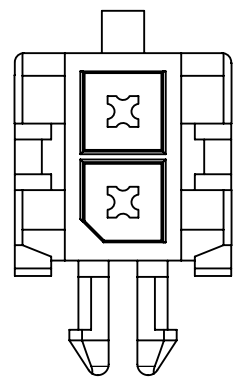


THIS DRAWING CONTAINS INFORMATION THAT IS PROPRIETARY TO MOLEX ELECTRONIC TECHNOLOGIES, LLC AND SHOULD NOT BE USED WITHOUT WRITTEN PERMISSION

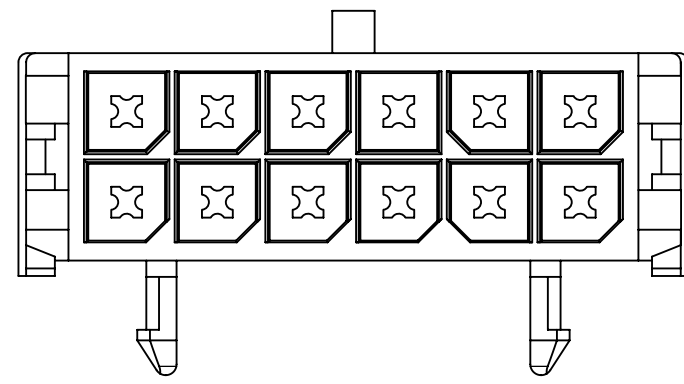
| | | | | | |
|--|---------|-------------------|--|--|--|
| DIMENSION UNITS | SCALE | CURRENT REV DESC: | molex | | |
| mm | 1:1 | | | | |
| GENERAL TOLERANCES (UNLESS SPECIFIED) | | | MICRO-FIT (3.0) DUAL ROW RIGHT ANGLE THRU HOLE HEADER ASS'Y | | |
| | MM | INCH | | | |
| 4 PLACES | ± | ± | PRODUCT CUSTOMER DRAWING | | |
| 3 PLACES | ± | ± 0.01 | | | |
| 2 PLACES | ± 0.25 | ± 0.014 | DOCUMENT NUMBER | | |
| 1 PLACE | ± 0.36 | ± | | | |
| 0 PLACES | ± | ± | DOC TYPE | | |
| ANGULAR TOL | ± 0.5 ° | | | | |
| DRAFT WHERE APPLICABLE MUST REMAIN WITHIN DIMENSIONS | | | DOC PART | | |
| THIRD ANGLE PROJECTION | | | | | |
| DRAWING | | | SERIES | | |
| C-SIZE | | | | | |
| SERIES | | | MATERIAL NUMBER | | |
| 43045 | | | | | |
| THIRD ANGLE PROJECTION | | | CUSTOMER | | |
| C-SIZE | | | | | |
| SERIES | | | SHEET NUMBER | | |
| 43045 | | | | | |

EC NO: 799654
DRWN: ZIXUAQ 2024/09/27
CHK'D: XQZHANG 2024/09/27
APPR: XQZHANG 2024/09/27
INITIAL REVISION:
DRWN: SAMIEC 2000/03/15
APPR: FSMITH 2016/08/23

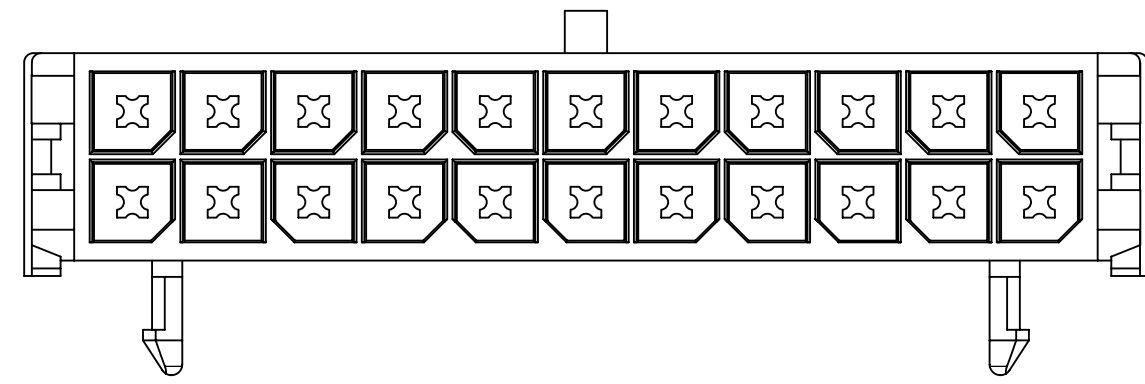
SD-43045-001 PSD 001 H1
SEE CHART GENERAL MARKET 1 OF 2



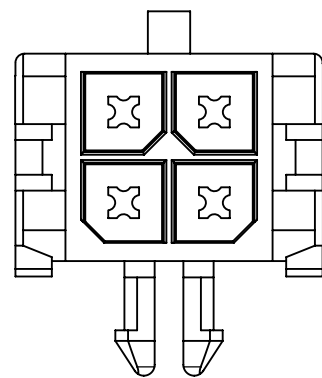
2 CKT



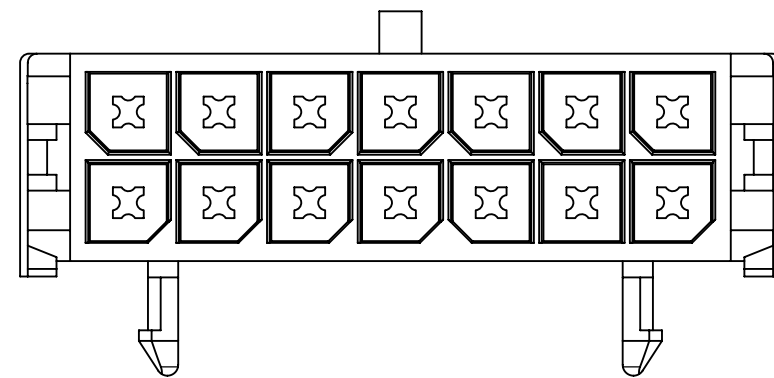
12 CKT



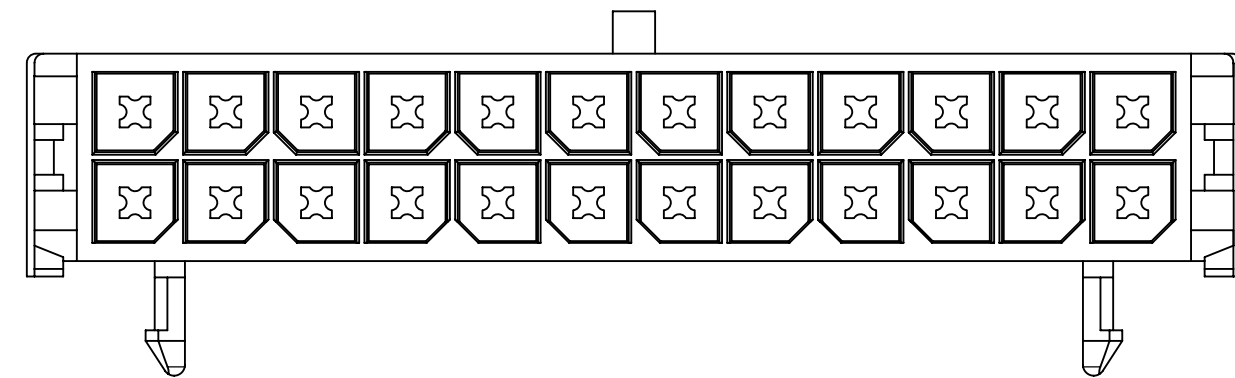
22 CKT



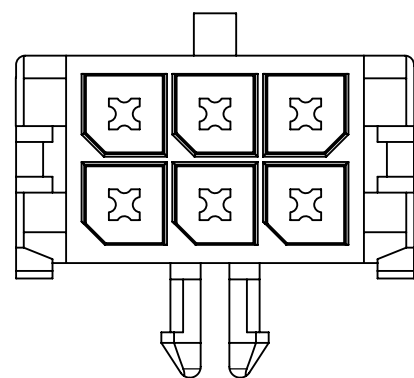
4 CKT



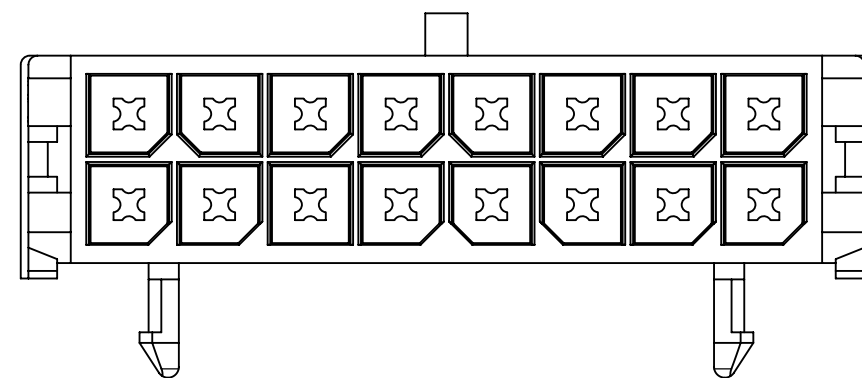
14 CKT



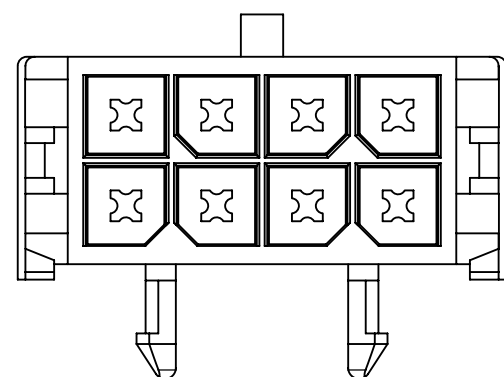
24 CKT



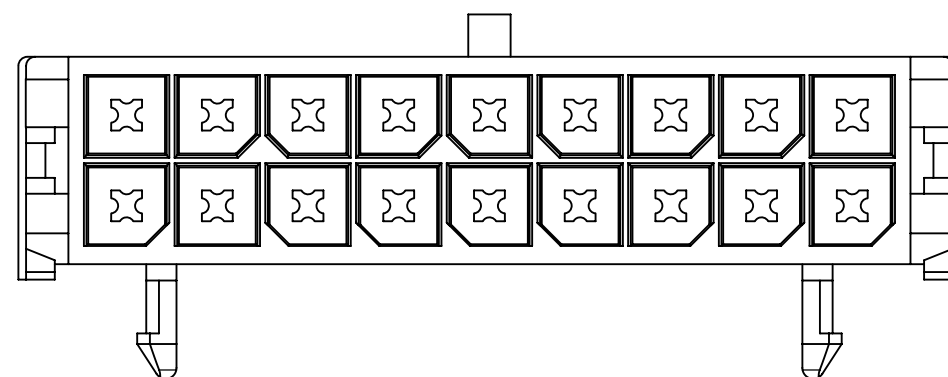
6 CKT



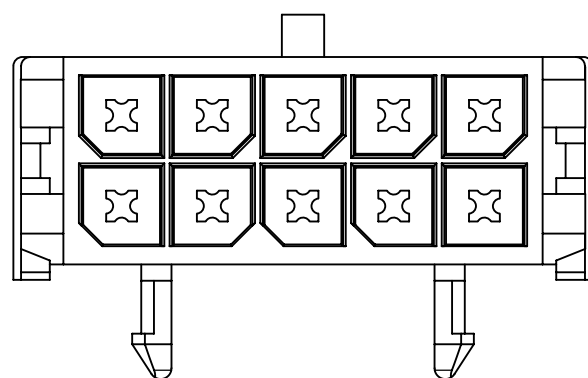
16 CKT



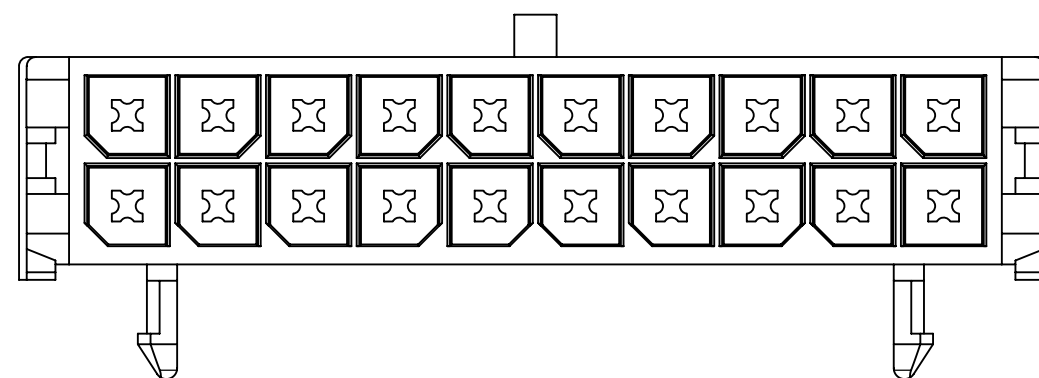
8 CKT




18 CKT



10 CKT



20 CKT

| | | | | | | | | | |
|---|--|---------|---------|--|--|------------------------|--|---|--|
| THIS DRAWING CONTAINS INFORMATION THAT IS PROPRIETARY TO MOLEX ELECTRONIC TECHNOLOGIES, LLC AND SHOULD NOT BE USED WITHOUT WRITTEN PERMISSION | | | | | | | | | |
| DIMENSION UNITS | | SCALE | | CURRENT REV DESC: | | | |  MICRO-FIT (3.0) DUAL ROW RIGHT ANGLE THRU HOLE HEADER ASS'Y | |
| mm | | 2:1 | | EC NO: 799654 | | | | | |
| GENERAL TOLERANCES (UNLESS SPECIFIED) | | | | DRWN: ZIXUAQ | | 2024/09/27 | | PRODUCT CUSTOMER DRAWING | |
| | | MM | INCH | CHK'D: XQZHANG | | 2024/09/27 | | | |
| 4 PLACES | | ± | ± | APPR: XQZHANG | | 2024/09/27 | | DOCUMENT NUMBER | |
| 3 PLACES | | ± | ± 0.01 | INITIAL REVISION: | | 2000/03/15 | | SD-43045-001 | |
| 2 PLACES | | ± 0.25 | ± 0.014 | DRWN: SAMIEC | | 2016/08/23 | | PSD 001 H1 | |
| 1 PLACE | | ± 0.36 | ± | APPR: FSMITH | | THIRD ANGLE PROJECTION | | DOC TYPE DOC PART REVISION | |
| 0 PLACES | | ± | ± | DRAFT WHERE APPLICABLE MUST REMAIN WITHIN DIMENSIONS | | DRAWING C-SIZE | | SERIES 43045 | |
| ANGULAR TOL | | ± 0.5 ° | | | | MATERIAL NUMBER | | CUSTOMER | |
| | | | | | | SEE CHART | | GENERAL MARKET | |
| | | | | | | | | SHEET NUMBER | |
| | | | | | | | | 2 OF 2 | |