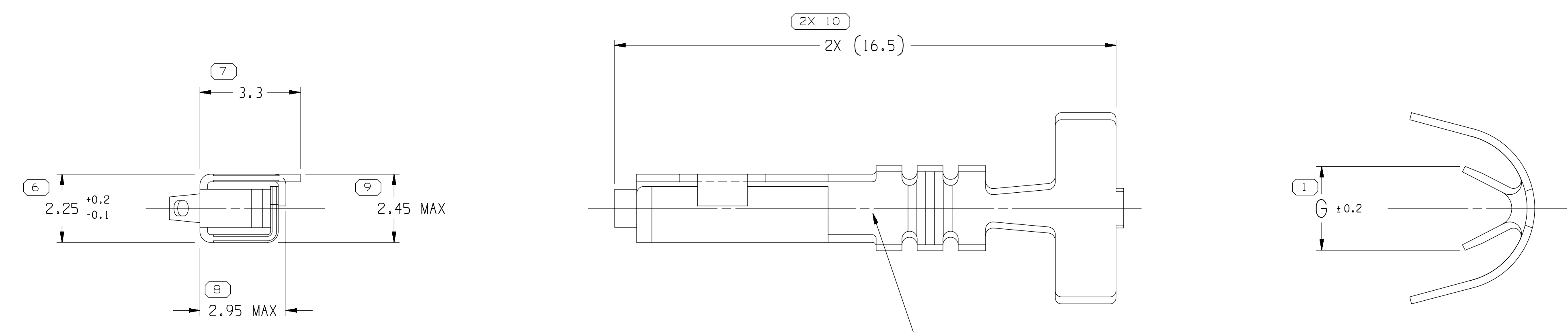
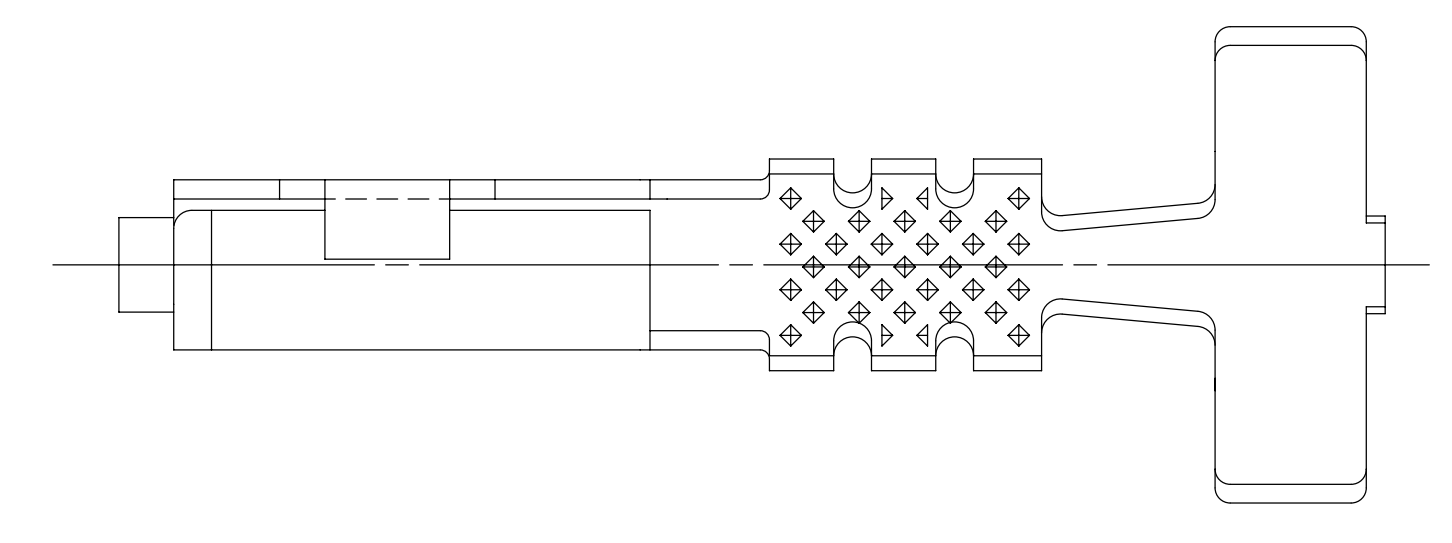


SYMBOL DEFINITION		TOTAL NO OF INSPECTIONS REQUIRED		MISSING SYMBOLS	
A DIMENSION WITHOUT AN INSPECTION REPORT SYMBOL () DOES NOT REQUIRE INSPECTION. IT MAY BE CONTROLLED ON THE INDIVIDUAL COMPONENT DRAWING.		12		NO MISSING SYMBOL NUMBER	
		LAST NO. USED		10	

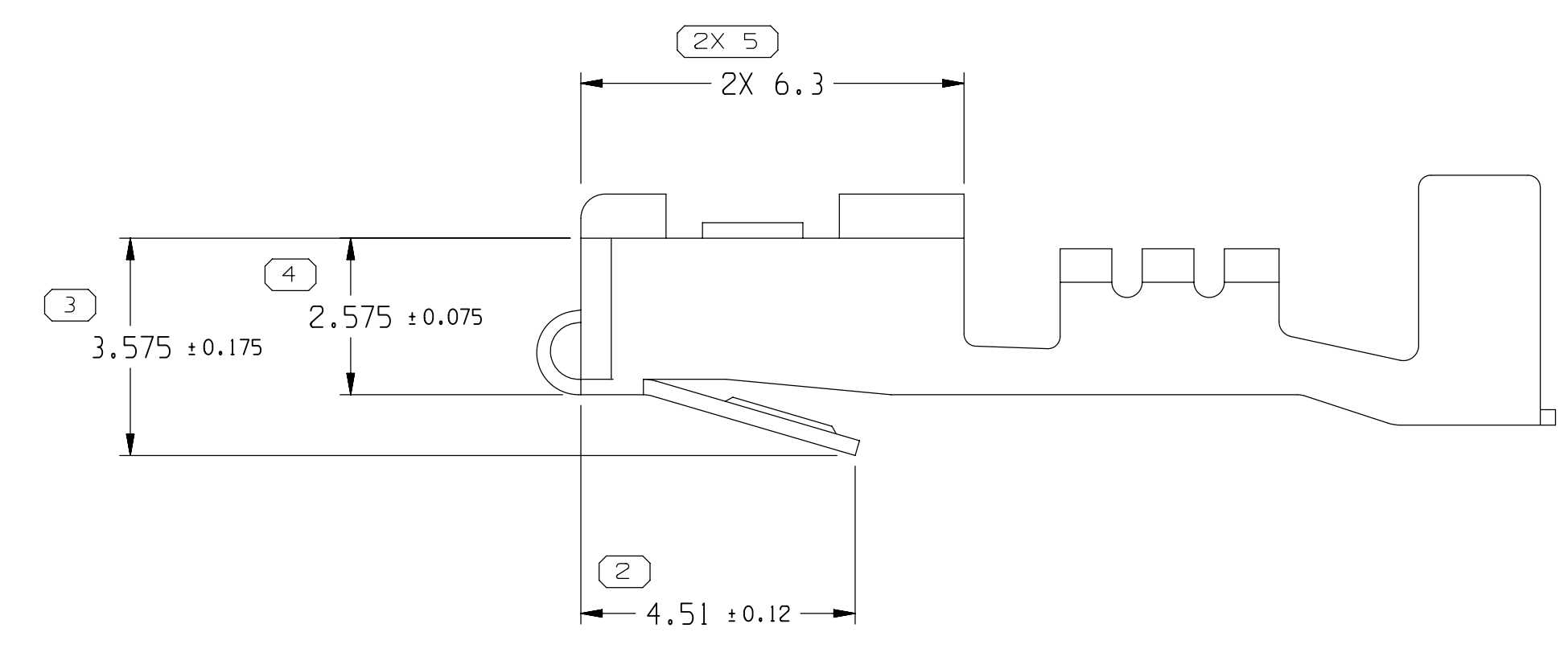
DWG STATUS				REVISION HISTORY				AUTH		DR		APVD	
DATE	STG	REV	N/P	CHG	ZONE	DATE	BY	DATE	BY	DATE	BY	DATE	BY
23MY02	R	10	-	-				222820	HAM	HAM	DLB		
22AU02	R	11	-	-		15366078, 15326396, 15326225, 12160223, 12160222, 12084200 & 12048074 - REVISED MAT'L SIZE AND MAT'L SPEC		211578	ESF	EAR	GMC		
06FE03	R	12	-	-		ALL ACTIVE PARTS - UPDATED PDM ATTRIBUTES		236348	MAC	MAC	JMP		
140C03	R	13	-	-		15366078 - MAT'L SPEC WAS M3620 HCN4		245588	ADK	TLD	BG		
17FE04	-	14	-	-		12048074, 12084200, 12092702, 12160222, 12160223, 15326225, 15326396 & 15366078 - T.O.D. UPDATED		250621	JS	JS	BG		
190C04	R	15	-	-		ALL ACTIVE PARTS - ADDED TERMINAL ID NOTE		260108	RTV	JAA	MKM		
09MR06	R	16	-	-		12084200 & 15326396 - UPDATED PDM ATTRIBUTES		276509	JBD	AUG	JES		
24MY06	R	17	-	-		12092702 - OBSOLETE		280889	GLS	JAA	BGG		
16.N06	R	18	-	-		ALL ACTIVE PARTS - PSD WAS #4		281799	JTZ	JVM	BGG		
27.JL12	R	19	-	-		12160222-23 - UPDATED MATERIAL CALLOUT AND ADDED TYPE 203		418958	AJP	AJP	MAA		
02.JA13	R	20	-	-		12160222-23 - UPDATED PDM ATTRIBUTES		420897	IMF	JAA	MAA		
24.JA13	R	21	-	-		12160222-23 - UPDATED PDM ATTRIBUTES		421210	AGC	JAA	MAA		
19FE15	R	22	-	-		12160222-23 - ADDED TARNISH NOTE		428876	JVR	JVM	JSM		
150C18	R	23	-	-		ALL ACTIVE PARTS - ADDED "SEALED" COLUMN ON CHART		441102	CGD	CGD	LES		
25FE20	R	24	-	-		12160222-23 - UPDATED PDM ATTRIBUTES		551096	J60	JAA	OMS		



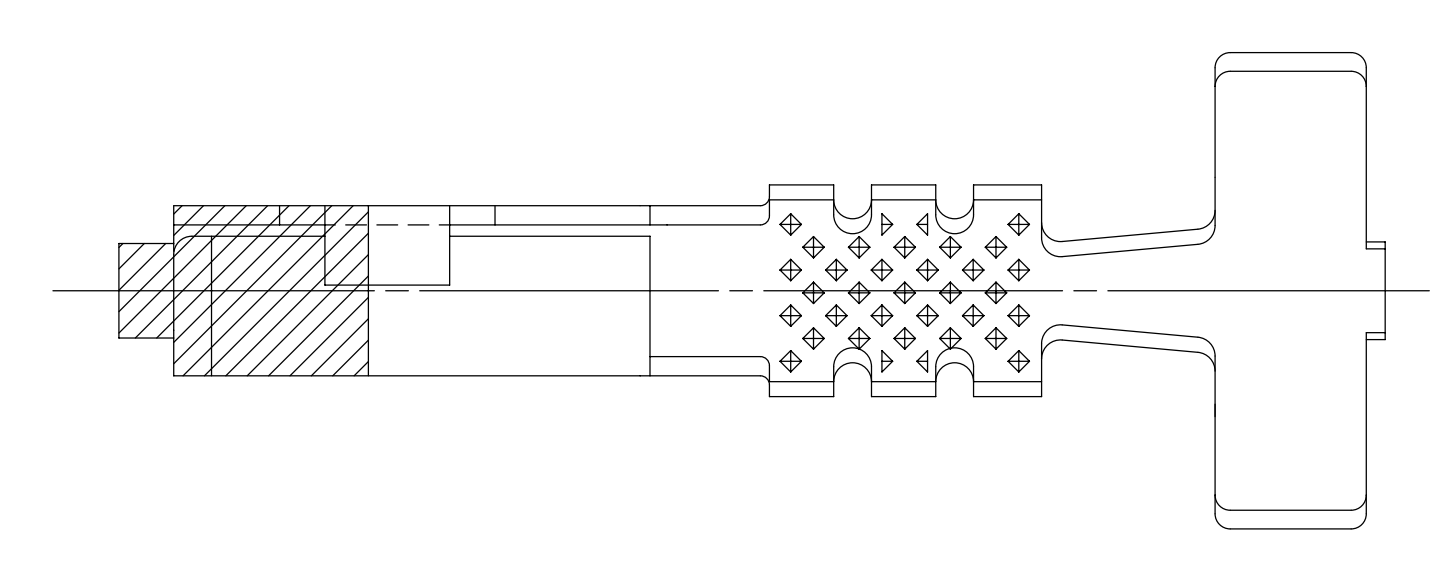
STAMP DIE ID "PXX" IN THIS AREA (0.6) CHARACTERS XX DESIGNATES DIE NUMBER LOCATION IS APPROXIMATE.



TYPE 202
SAME AS TYPE 101 EXCEPT AS SHOWN



TYPE 201



TYPE 203
SAME AS TYPE 101 EXCEPT AS SHOWN

- NOTES:
- UNLESS OTHERWISE SPECIFIED AND/OR INDICATED: DIMENSIONS ARE TO FACE OF VIEW SHOWN AND AUTOMATICALLY ROUNDED BY COMPUTER FOR INSPECTION. (SEE MATH MODEL FOR PRECISE DIMENSION) FOR ALL OTHER DIMENSIONS NOT SHOWN BUT REQUIRED FOR TOOL BUILD, SEE MATH MODEL FOR PRECISE TOOL PATH DATA.
 - RECOMMENDED MATING BLADE - WIDTH : 1.64/1.4 THICKNESS : 0.86/0.79 LENGTH : 7.1/6.9
 - "PXX" INDICATES "P" PLUS LAST TWO DIGITS OF MAKE SERIES NUMBER IP01, PO2, PO3, ETC1.
 - DO NOT PROBE, TEST OR OTHERWISE CONTACT THE INTERIOR REGION (THE SPRING OR ANY MOVING PART) OF THIS TERMINAL. SEVERE DAMAGE CAN OCCUR, COMPROMISING THE PERFORMANCE OF THE ELECTRICAL INTERFACE.
 - FOR TERMINALS PACKAGED & STORED IN THE APPROVED MANNER, TARNISH ON SILVER PLATED SURFACES WILL NOT AFFECT THE PERFORMANCE OF THE PART.

PART NO	REV	N/P	MAT'L SIZE	MAT'L SPEC	PART NO	REV	N/P	MAT'L SIZE	MAT'L SPEC	SIZE (MM ²)	ID	DIA	TYPE	G	SEALED
-	-	-	0.254 X 30.96	-	15366078	05	AC	0.254 X 29.8	AU PLATED COPPER ALLOY	1-0.8-0.5	60	2.8-2.03	202	3	X
-	-	-	0.254 X 30.96	-	15326396	03	AD	0.254 X 29.8	AU PLATED COPPER ALLOY	0.5-0.35	21	2.2-1.3	202	2.1	X
-	-	-	0.254 X 30.96	-	15326225	03	AC	0.254 X 29.8	SN PLATED COPPER ALLOY	1-0.8-0.5	60	2.8-2.03	202	3	X
-	-	-	0.254 X 30.96	-	12160223	06	AE	0.254 X 29.8	AG PLATED COPPER ALLOY	1-0.8	17	2.65-1.85	203	3	X
-	-	-	0.254 X 30.96	-	12160222	06	AE	0.254 X 29.8	AG PLATED COPPER ALLOY	0.5-0.35	21	2.2-1.3	203	2.1	X
12092702	03	AB	0.254 X 30.96	METAL COPPER ALLOY	12084200	06	AD	0.254 X 29.8	SN PLATED COPPER ALLOY	0.5-0.35	21	2.2-1.3	202	2.1	X
-	-	-	0.254 X 30.96	-	12059611	C1	-	0.254 X 30.96	SN PLATED COPPER ALLOY	0.35	22	2-1.47	201	2.2	-
12092667	B1	-	0.254 X 30.96	METAL COPPER ALLOY	12048074	11	AC	0.254 X 29.8	SN PLATED COPPER ALLOY	1-0.8-0.5	60	2.8-2.03	202	3	X
			UNPLATED					PLATED							

UNLESS OTHERWISE SPECIFIED	
THIS DOCUMENT IS IN ACCORDANCE WITH ASME Y14.5M-1994 AS MODIFIED BY THE 2003 GLOBAL DIMENSIONING AND TOLERANCING ADDENDUM - 1997. ALL GEOMETRIC TOLERANCES AND RELATED SURFACE RELATED FEATURES SHALL BE PERFECT FORM UNLESS OTHERWISE SPECIFIED BY OTHERWISE SPECIFIED SEPARATE POSITION CALLOUTS OR LOCUS OR TOLERANCES. REGARDLESS OF DATUM REFERENCE, ALL DIMENSIONS ARE IN MILLIMETERS.	
6 PROCESS SENSITIVE DIMENSION	INDICATES THAT PHYSICAL PARTS ARE NOT AVAILABLE FOR ORDERING.
INDICATES THAT PHYSICAL PARTS ARE NOT AVAILABLE FOR ORDERING.	CONTACT APPLICABLE SALES TO ASSURE AVAILABILITY OF PARTS.
DWG TYPE	PART DRAWING
STYLE	D
VOLUME (OPT)	DISTR CODE
UNLESS OTHERWISE SPECIFIED	
THIS DOCUMENT IS IN ACCORDANCE WITH ASME Y14.5M-1994 AS MODIFIED BY THE 2003 GLOBAL DIMENSIONING AND TOLERANCING ADDENDUM - 1997. ALL GEOMETRIC TOLERANCES AND RELATED SURFACE RELATED FEATURES SHALL BE PERFECT FORM UNLESS OTHERWISE SPECIFIED BY OTHERWISE SPECIFIED SEPARATE POSITION CALLOUTS OR LOCUS OR TOLERANCES. REGARDLESS OF DATUM REFERENCE, ALL DIMENSIONS ARE IN MILLIMETERS.	
THIRD ANGLE PROJECTION	DO NOT SCALE
USE MATH DATA	NX

•APTIV•
CONNECTION SYSTEMS
WARREN, OH
COPYRIGHT 1996 APTIV, ALL RIGHTS RESERVED.
THIS DRAWING IS THE PROPERTY OF APTIV AND CONTAINS APTIV CONFIDENTIAL INFORMATION. THE REPRODUCTION, DISTRIBUTION AND UTILIZATION OF THIS DOCUMENT OR ITS RELATED CAD DATA, AS WELL AS COMMUNICATION OF ANY CONTENT TO OTHERS, WITHOUT EXPRESS AUTHORIZATION, IS PROHIBITED.

DR	DATE
APVD1 S. LIMON A.	26AU96
APVD2 FCO. KOPCA	26AU96
APVD3 T. DUTTLE	22OC96
APVD4	
APVDS	

SUBSTANCES OF CONCERN AND RECYCLED CONTENT PER APTIV 10949001

MATERIAL SPEC CHART

DRAWING NAME
TAXI TERM F M/P 150 LOCKING LANCE

DRAWING NUMBER
12047884

SIZE A2 SCALE 10:1 FRAME NO 1 OF 1 SHEET NO 2 OF 2 STG REV N/P R 24 -