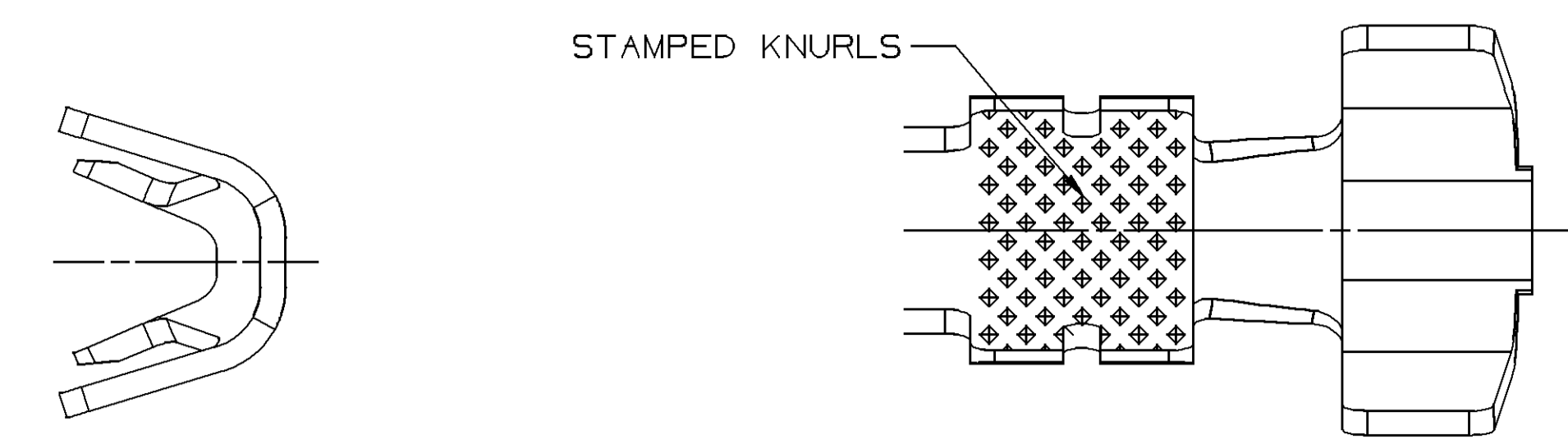
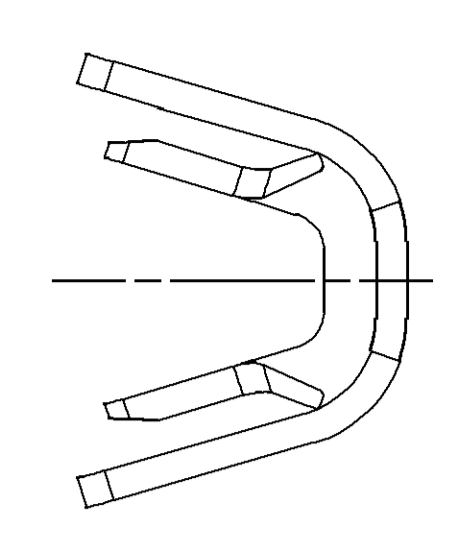


KNURL VIEW - TYPE 102
SAME AS TYPE 101
EXCEPT AS SHOWN



TYPE 102
SAME AS TYPE 101
EXCEPT AS SHOWN

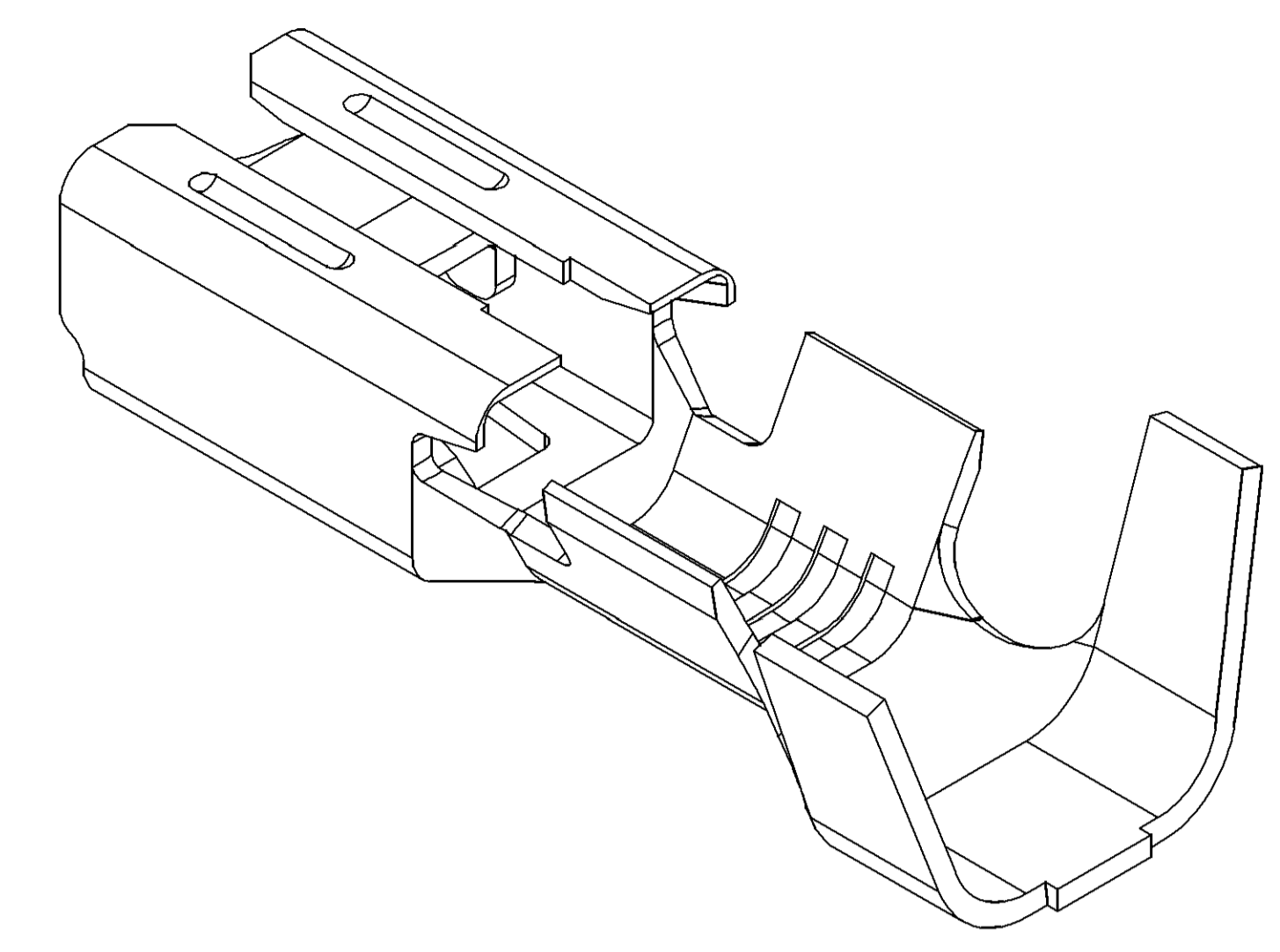


TYPE 103
SAME AS TYPE 101
EXCEPT AS SHOWN

KNURL VIEW - TYPE 103
SAME AS TYPE 101
EXCEPT AS SHOWN

SYMBOL DEFINITION		TOTAL NO OF INSPECTIONS REQUIRED	
	A DIMENSION WITHOUT AN INSPECTION REPORT SYMBOL DOES NOT REQUIRE INSPECTION. IT MAY BE CONTROLLED ON THE INDIVIDUAL COMPONENT DRAWING.	17	
	LAST NO. USED	17	

MISSING SYMBOLS	
8	

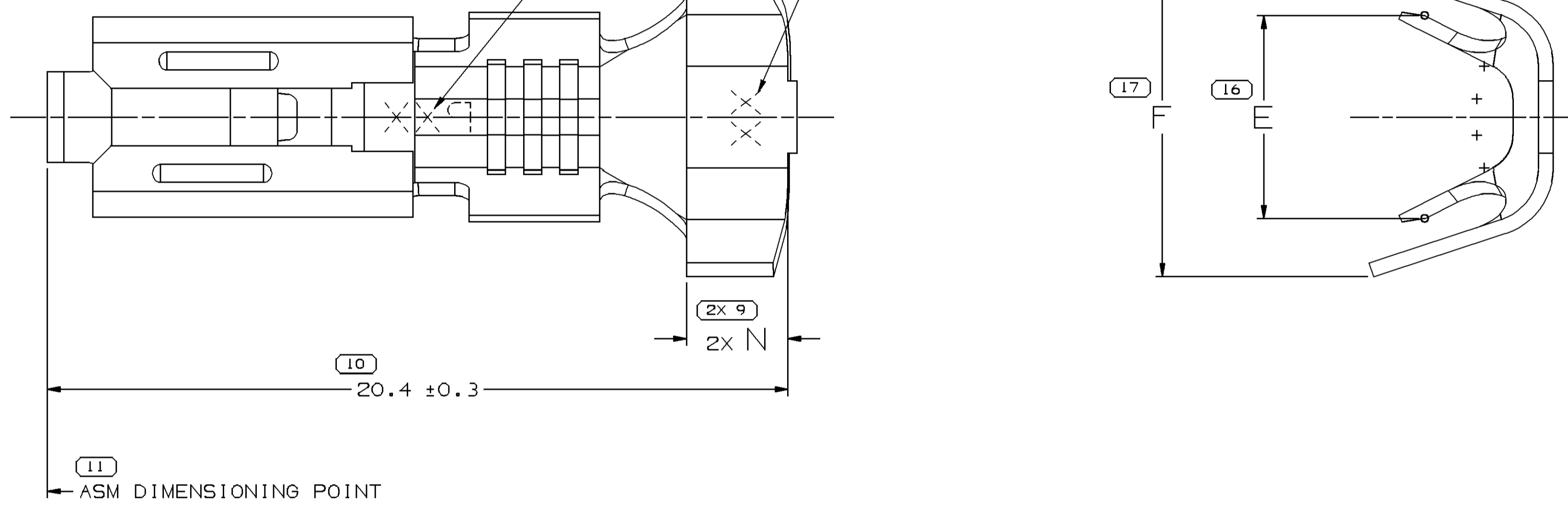
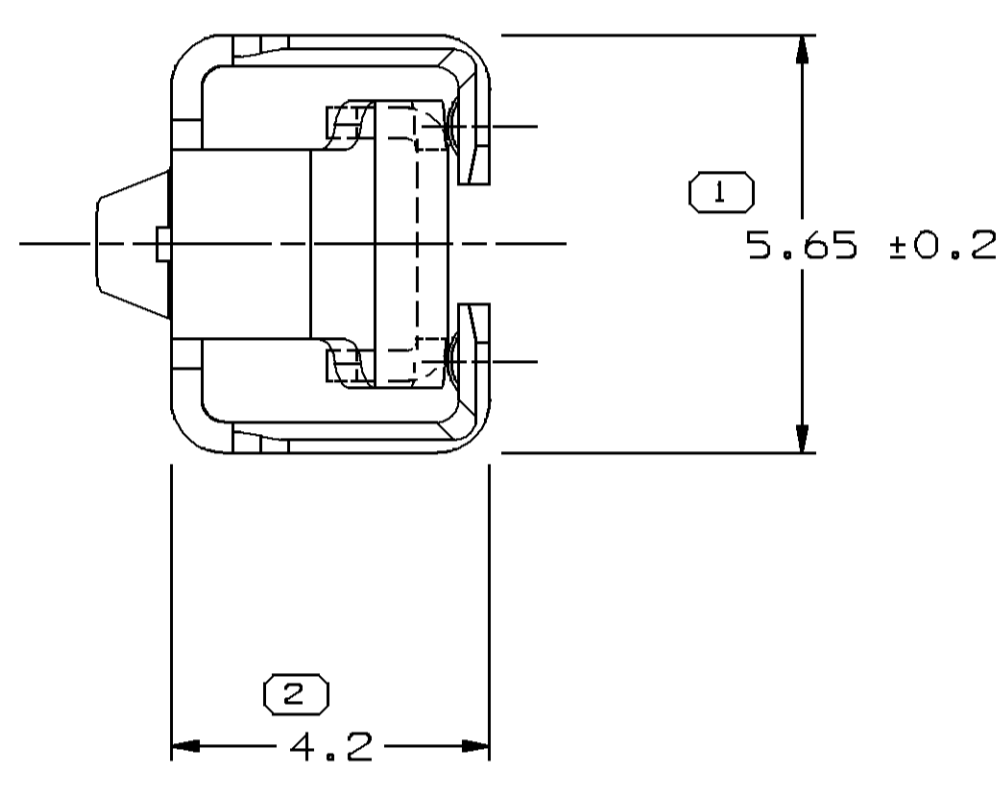


CARRIER STRIP
SCALE 1:1

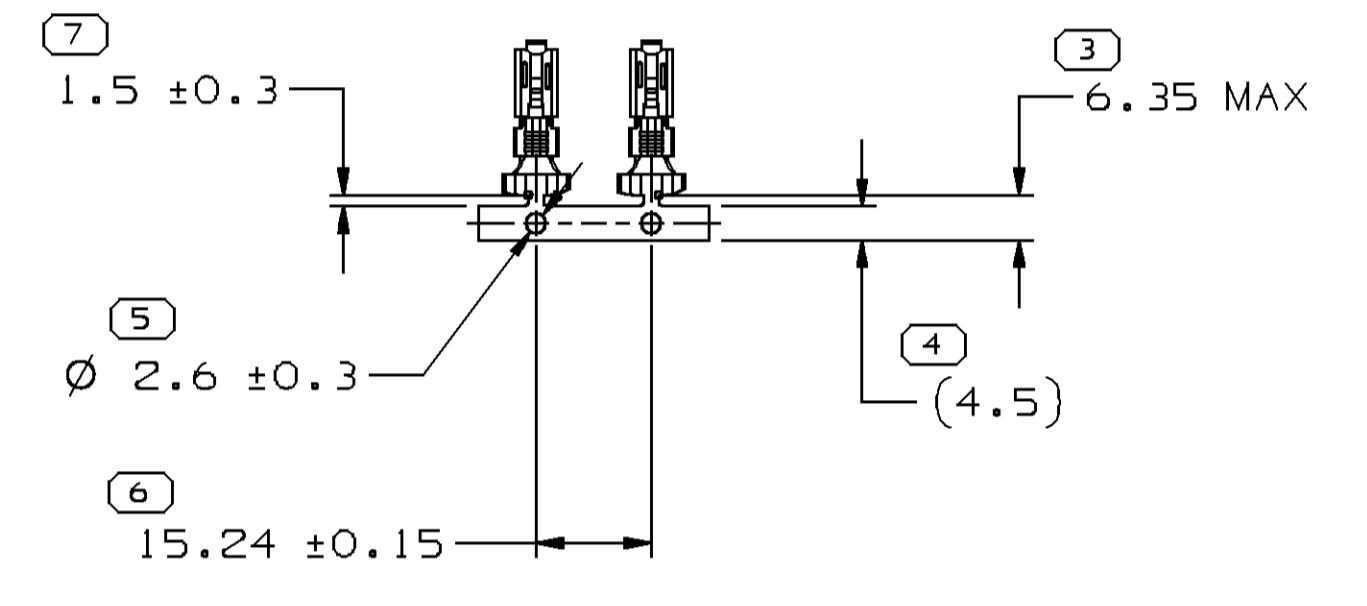
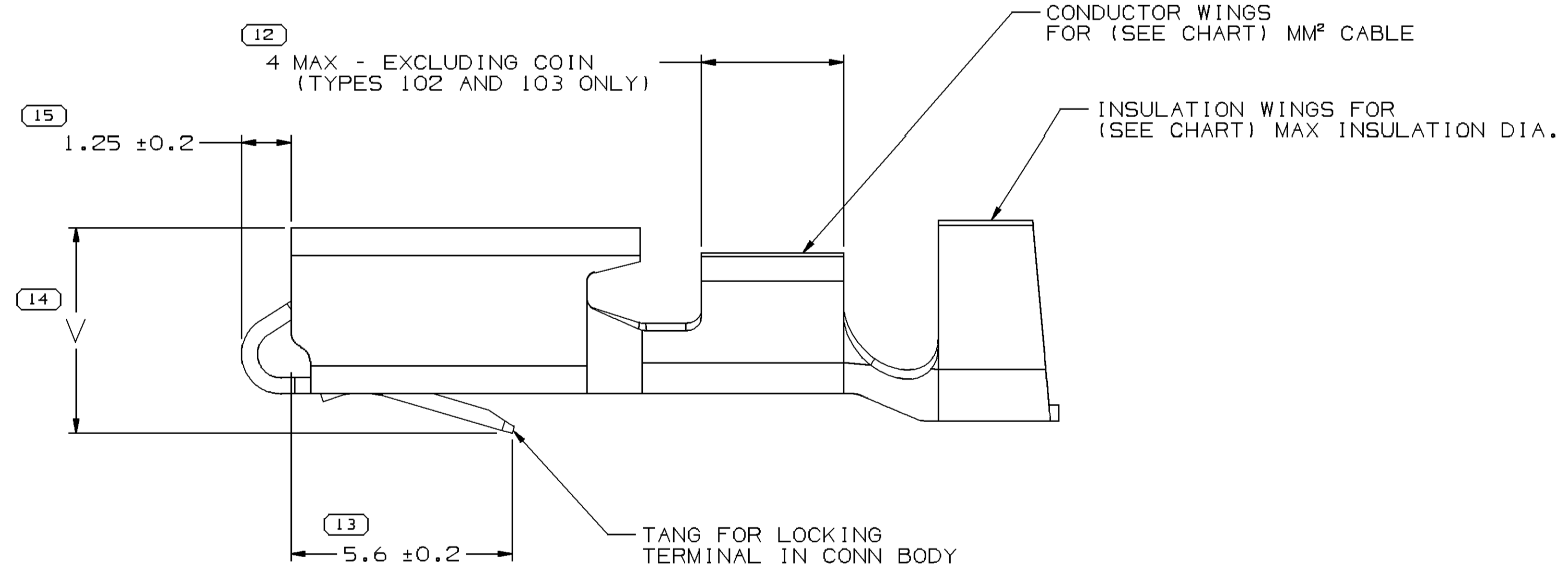
DATE	STG	REV	N/P	CHG	ZONE	REVISION HISTORY	AUTH	DR	APV/APPV
02FE04	R	01	-	-	-	CLEARED REVISION COLUMN: ALL PARTS - REDRAWN TO PD: 12052221 - 2,4 WAS 6,24	250880	ECB	AUG BDO
11AP05	R	02	-	-	-	ALL ACTIVE PARTS - ADDED GRAPHIC OF KNURL FOR TYPE 102 & 103	266714	MDH	JAA MKM
19AP05	R	03	-	-	-	12059243 & 12052221 - CORRECTED DIM "V" WAS 5,4	267480	RTV	JAA BDO
21JUL05	R	04	-	-	-	12015860, 12052219, 12052221, 12084595 AND 12124304 - CREATED NISSAN CUSTOMER PART DRAWING	265749	JBD	FRG BDO
21JUL05	R	05	-	-	-	12084595 - UPDATED PDM ATTRIBUTES AND CREATED FORD CUSTOMER PART DRAWING	269329	JBD	FRG BDO
20FE06	R	06	-	-	-	12124057 & 1205221 - DIM "M" WAS 2,4 & DIM "N" WAS 2,8 AND 12015860 - DIM "M" WAS 2,8 & DIM "N" WAS 2,4	277475	JOA	FRG BDO
20AUG08	R	07	-	-	-	12033823, 12124026 & 12015828 - OBSOLETE AND REPLACED BY 12084595, 12124057 & 12015860	405818	MDH	FKV RFP
26SE08	R	08	-	-	-	13732012 AND 13732419 - RELEASED	406184	GEM	JVM GEM
05FE09	R	09	-	-	-	ALL ACTIVE PARTS - REVISED MAT'L CALLOUT TO GENERIC CALLOUT: 12033822, 12059243 & 12066267 - OBSOLETE AND REPLACED BY 12124304, 12052221 & 12052219	407282	JTZ	FKV RFP
12JUN09	R	10	-	-	-	ALL ACTIVE PARTS - REMOVED DIMENSION "M"	408152	EBR	JVM GEM
14JUN10	R	11	-	-	-	13732419 - INACTIVE	411091	AHY	JVM GEM
04MR11	R	12	-	-	-	ALL ACTIVE PARTS - UPDATED PDM ATTRIBUTES	413541	MAD	JVM GEM
16JUN15	R	13	-	-	-	12020366, 12015862 MAKE OBSOLETE	429948	RCE	LES WMR
31AUG16	R	14	-	-	-	12015860, 12052219, 12052221, 12084595, 12124057, 12124304 AND 13732012 - UPDATED GRAPHICS OF STAMPED "ID" & STAMP "PXX" AND ADDED STAMP "PXX" LABEL	434043	JVM	JVM LES

STAMP "PXX" ON UNDERSIDE IN THIS AREA WITH 1.3 HIGH CHARACTERS PER NOTE #4. CHARACTERS MUST BE POSITIONED IN DIRECTION SHOWN OR AT 180 DEGREES TO DIRECTION SHOWN. OPTIONAL; STAMP "PED"

STAMPED I.D. ON UNDERSIDE IN THIS AREA WITH 1.3 HIGH CHARACTERS AS SPECIFIED IN CHART



TYPE 101



- NOTES
- UNLESS OTHERWISE SPECIFIED AND/OR INDICATED: DIMENSIONS ARE TO FACE OF VIEW SHOWN AND AUTOMATICALLY ROUNDED BY COMPUTER FOR INSPECTION (SEE MATH MODEL FOR PRECISE DIMENSIONS). FOR ALL OTHER DIMENSIONS NOT SHOWN BUT REQUIRED FOR TOOL BUILD, SEE MATH MODEL FOR PRECISE TOOL PATH DATA.
 - RECOMMENDED MATING BLADE 4.8 X 0.81.
 - TERMINALS TO HAVE TERMINAL ENGAGE OF 8N TO 28N AND TERMINAL DISENGAGE OF 8N TO 28N WHEN MATED TO A 4.8 X 0.81 HARDENED STEEL BLADE. (DISENGAGE MAY BE EXCLUDED WHEN BOX HEIGHT, BOX WIDTH, MINIMUM BOX ENTRANCE, NOSE RADIUS AND TERMINAL ENGAGE ARE MAINTAINED.)
 - "PXX" INDICATES "P" PLUS LAST TWO DIGITS OF MAKE DIE SERIES NUMBER (P01, P02, P03, ETC).
 - REF. GAGE #6904.
 - DO NOT PROBE, TEST OR OTHERWISE CONTACT THE INTERIOR REGION (SPRING OR ANY MOVING PART) OF THIS TERMINAL. SEVERE DAMAGE CAN OCCUR, COMPROMISING THE PERFORMANCE OF THE ELECTRICAL INTERFACE.
 - ** INDICATES DIMENSIONS USED ONLY ON PARTS THAT HAVE THE ANTI-ROTATION NIB (SEE CHART). ANTI-ROTATION NIB NOT TO BE USED ON 0.8MMF AND SMALLER CABLE.

PART NO	REV	N/P	MAT'L SIZE	MAT'L SPEC	PART NO	REV	N/P	MAT'L SIZE	MAT'L SPEC	SIZE (MMF)	DIA	ID NO	BLANK TYPE	E±0.4	F±0.4	N±0.15	V±0.15	ANTI-ROTATION NIB
12124026	B2	-	0.406 X 33.73	COPPER ALLOY	13732012	01	AD	0.406 X 33.73	HIGH PERFORMANCE COPPER ALLOY	3 - 5	5.24 - 3.49	11	103	4.6	7.6	2.8	5.2	YES
12059243	E3	-	0.406 X 33.73	COPPER ALLOY	13732419	01	AC	0.406 X 33.73	HIGH PERFORMANCE COPPER ALLOY	1 - 2	3.97 - 2.48	15	103	3.7	6	2.8	5.2	YES
12033823	H2	-	0.406 X 33.73	COPPER ALLOY	12124057	B6	-	0.406 X 33.73	TIN PLATED COPPER ALLOY	TWO 1 - 0.8	2.7 - 1.9	217	103	4.3±/-0.3	6.6	2.4	5.2	YES
12033822	G2	-	0.406 X 33.73	COPPER ALLOY	12052219	E5	-	0.406 X 33.73	TIN PLATED COPPER ALLOY	0.5 0.35	2.51 - 1.84	21	102	2.4±/-0.2	3.8±/-0.3	2.4	5.2	**
12020141	F	-	0.406 X 33.73	COPPER ALLOY	12052221	E9	-	0.406 X 33.73	TIN PLATED COPPER ALLOY	3	3.2 - 3.04	12	103	4.6	6	2.4	5.2	YES
12020139	F	-	0.406 X 33.73	COPPER ALLOY	12084595	D6	-	0.406 X 33.73	TIN PLATED COPPER ALLOY	3 - 5	5.24 - 3.49	11	103	4.6	7.6	2.8	5.2	YES
12015830	D	-	0.406 X 33.73	COPPER ALLOY	12124304	B5	-	0.406 X 33.73	TIN PLATED COPPER ALLOY	1 - 2	3.97 - 2.48	15	103	3.7	6	2.8	5.2	YES
12015829	D	-	0.406 X 33.73	COPPER ALLOY	12020366	F5	-	0.406 X 33.73	TIN PLATED COPPER ALLOY	ONE 0.8-0.5 & ONE 2-1	3.12-2 & 3.97-2.48	1519	101	5.6	8.8	2.8	5.2	YES
12015828	J4	-	0.406 X 33.73	COPPER ALLOY	12020142	G	-	0.406 X 33.73	TIN PLATED COPPER ALLOY	TWO 0.35	2 - 1.35	222	101	3.6	5.3	2.8	5.2	**
12015146	H	-	0.406 X 33.73	COPPER ALLOY	12020140	G	-	0.406 X 33.73	TIN PLATED COPPER ALLOY	0.35	2 - 1.35	22	101	2.2	3.6	2.8	5.2	**
12015145	H	-	0.406 X 33.73	COPPER ALLOY	12015919	F	-	0.406 X 33.73	TIN PLATED COPPER ALLOY	TWO 1	2.68 - 2.48	216	101	6.6	7.6	2.8	5.2	YES
12015144	F	-	0.406 X 33.73	COPPER ALLOY	12015863	E	-	0.406 X 33.73	TIN PLATED COPPER ALLOY	TWO 0.8 - 0.5	3.12 - 2.03	219	101	5.1	8	2.8	5.2	YES
					12015830	D	-	0.406 X 33.73	COPPER ALLOY	5 - 3	5.24 - 3.49	11	101	4.6	7.6	2.8	5.2	YES
					12015829	D	-	0.406 X 33.73	COPPER ALLOY	2 - 1	3.97 - 2.48	15	101	3.7	6	2.8	5.2	YES
					12015828	J4	-	0.406 X 33.73	COPPER ALLOY	0.8 - 0.5	3.12 - 2.03	19	102	3.2	5	2.8	5.2	**
					12015332	F	-	0.406 X 33.73	COPPER ALLOY	TWO 0.8 - 0.5	3.12 - 2.03	219	101	5.1	8	2.8	5.2	YES
					12015146	H	-	0.406 X 33.73	COPPER ALLOY	5 - 3	5.24 - 3.49	11	101	4.6	7.6	2.8	5.2	YES
					12015145	H	-	0.406 X 33.73	COPPER ALLOY	2 - 1	3.97 - 2.48	15	101	3.7	6	2.8	5.2	YES
					12015144	F	-	0.406 X 33.73	COPPER ALLOY	0.8 - 0.5	3.12 - 2.03	19	101	3.2	5	2.8	5.2	**

LINE DRAWN THROUGH PART NUMBER INDICATES THAT PHYSICAL PARTS ARE NOT AVAILABLE FOR ORDERING.

PART NUMBERS THAT DO NOT HAVE A LINE PRESENT INDICATE THAT PHYSICAL PARTS ARE AVAILABLE FOR ORDERING.

CONTACT DELPHI SALES TO ASSURE AVAILABILITY OF PARTS.

DWG TYPE: PART DRAWING

STITLE: TAXI TERM F/M/P 480

VOLUME (OMP): D

DISTR CODE: D

UNLESS OTHERWISE SPECIFIED THIS DOCUMENT IS IN ACCORDANCE WITH ASME Y14.5M-1994 AS MODIFIED BY THE 3D GLOBAL DIMENSIONING AND TOLERANCING ADDENDUM-2001. SEPARATE PATTERNS OF FEATURES MAY BE SHOWN SEPARATELY, REGARDLESS OF DIMENSIONS.

ALL DIMENSIONS ARE IN MILLIMETERS

REFERENCE:

2 PROCESS SENSITIVE DIMENSION

DIMENSIONS ENCLOSED IN () INDICATE REFERENCE DIMENSIONS AND NO TOLERANCE LIMITS ARE ESTABLISHED

DIMENSIONAL RANGE (MM) CHART ID FROM TO 0 12 >12

TOLERANCE UNLESS OTHERWISE SPECIFIED 10.1 10.2 10.2

ANGULAR TOLERANCE 12°

THIRD ANGLE PROJECTION

DO NOT SCALE

USE MATH DATA

DATE: 12/08/16

DR: R.L. PETERSON

APV01: F. HESTON

APV02: J.S. PENNEY

APV03: E.J. TOLNAR

APV04:

APV05:

DATE: 09NOB4

26NOB4

12DEB4

12DEB4

SUBSTANCES OF CONCERN AND RECYCLED CONTENT, PER DELPHI (1944901)

MATERIAL: SEE CHART

DRAWING NUMBER: 12015247

SIZE: A0

SCALE: 10:1

FRAME NO: 1 OF 1

SHEET NO: 1 OF 1

STG: R

REV: 14

N/P: -

DELPHI

DELPHI PACKARD ELECTRICAL/ELECTRONIC ARCHITECTURE

WARREN, OH

COPYRIGHT 1984 DELPHI CORPORATION AND/OR ITS AFFILIATES. ALL RIGHTS RESERVED.

THIS DRAWING IS THE PROPERTY OF DELPHI CORPORATION AND CONTAINS DELPHI CONFIDENTIAL INFORMATION. THE REPRODUCTION, DISTRIBUTION AND UTILIZATION OF THIS DOCUMENT OR ITS CONTENTS OR DATA, AS WELL AS COMMUNICATION OF ANY CONTENT TO OTHERS, WITHOUT EXPRESS AUTHORIZATION, IS PROHIBITED.

OR: R.L. PETERSON

DATE: 09NOB4

APV01: F. HESTON

26NOB4

APV02: J.S. PENNEY

12DEB4

APV03: E.J. TOLNAR

12DEB4

APV04:

APV05:

SUBSTANCES OF CONCERN AND RECYCLED CONTENT, PER DELPHI (1944901)

MATERIAL: SEE CHART

DRAWING NUMBER: TAXI TERM F/M/P 480

DRAWING NUMBER: 12015247

SIZE: A0

SCALE: 10:1

FRAME NO: 1 OF 1

SHEET NO: 1 OF 1

STG: R

REV: 14

N/P: -