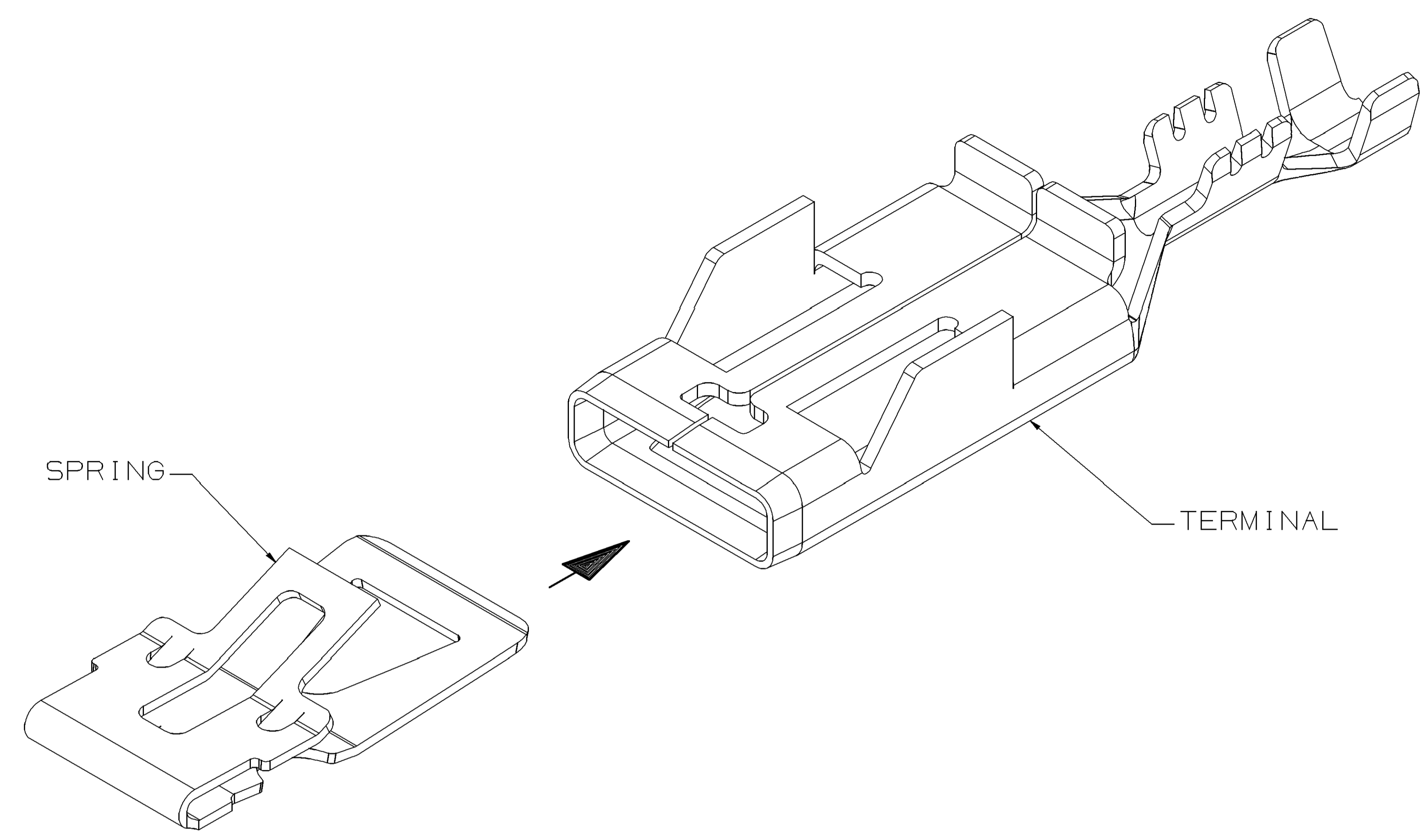
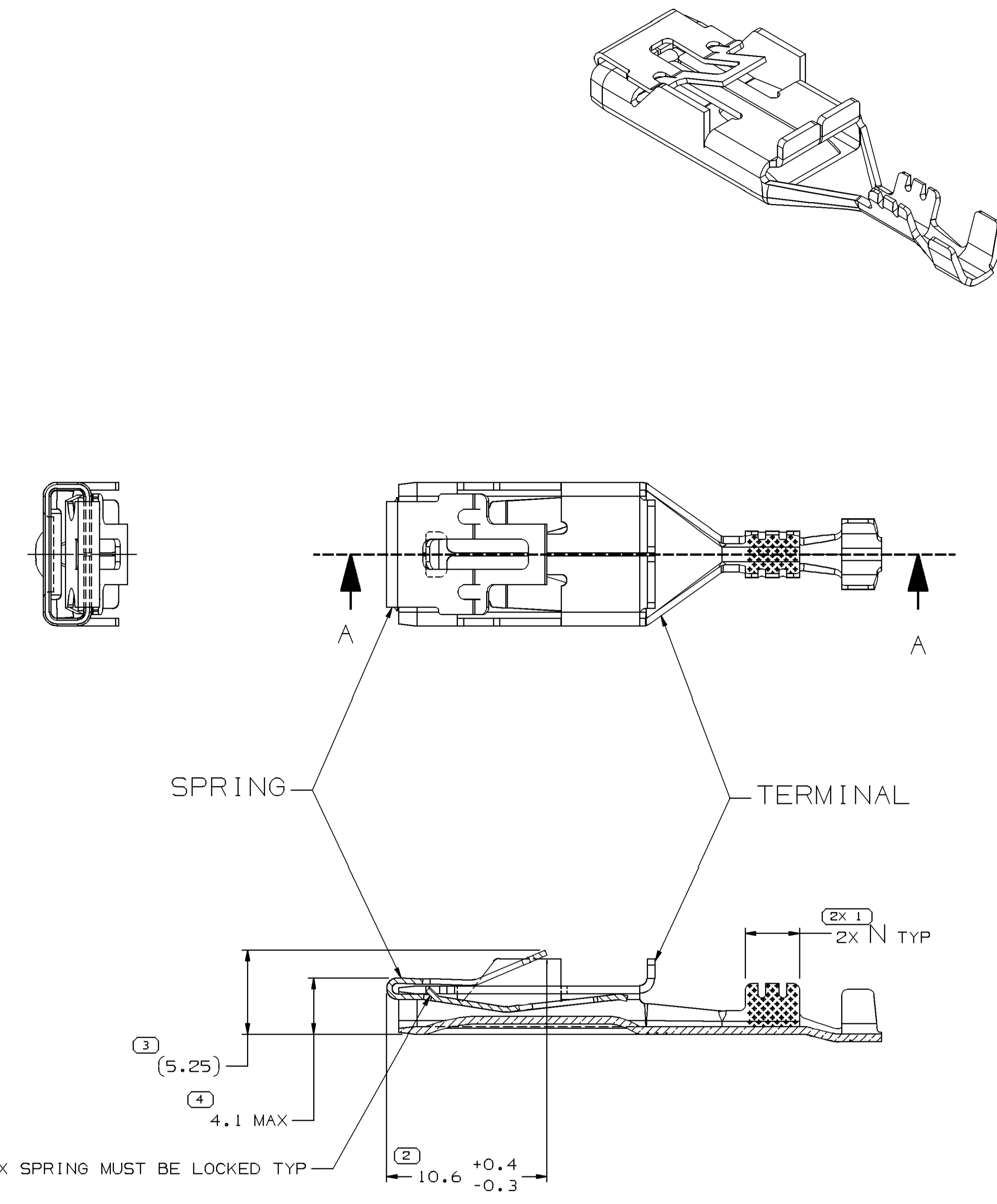


SYMBOL DEFINITION		TOTAL NO OF INSPECTIONS REQUIRED		MISSING SYMBOLS	
A DIMENSION WITHOUT AN INSPECTION REPORT SYMBOL DOES NOT REQUIRE INSPECTION. IT MAY BE CONTROLLED ON THE INDIVIDUAL COMPONENT DRAWING.			8	NO MISSING SYMBOL NUMBER	
		LAST NO. USED	5		

DWG STATUS				REVISION HISTORY				AUTH		DR		APVD	
DATE	STG	REV	N/P	CHG	ZONE								
21MR00	R	001	-	-		CLEARED REV COLUMN; ALL PARTS - REDRAWN TO PD	000009	EVV	001	AL			
07N001	R	002	-	-		12065915 - UPDATED PDM ATTRIBUTES	215046	MRL	MRL	DLB			
30JA02	R	003	-	-		12065918 - UPDATED PDM ATTRIBUTES	219729	JMR	JMR	AM			
30JA02	R	004	-	-		12110128 - UPDATED PDM ATTRIBUTES	219730	JMR	JMR	AM			
07MR06	R	05	-	-		12146942 - INACTIVE	278088	JTZ	JVM	BDG			
15OC10	R	06	-	-		ALL ACTIVE PARTS - DIM (5.25) WAS 5.25 MIN	412233	MAL	MAL	MMC			
20JA11	R	07	-	-		12092444, 12065916 & 12110128 - UPDATED PDM ATTRIBUTES	413105	MAL	JAA	BEM			
25JL11	R	08	-	-		ALL ACTIVE PARTS - REVISED RECOVERY NOTE	414881	AJP	JVM	BEM			
25FE15	R	09	-	-		12065915-16, 12065918, 12092444-45, 12110127-28, 12129414, 15336748 - ADDED TARNISH INFO NOTE	428877	ABH	JVM	JSM			
05N015	R	10	-	-		ALL PARTS - ADDED RETENTION FORCE SPRING NOTE	431313	CER	CER	FDL			
01JL16	R	11	-	-		15336748 & 12129414 - N MAX WAS 7	433575	LES	LES	VMR			



STANDARD ASSEMBLY
SCALE 10:1



SECTION A-A
STANDARD CRIMP TERMINAL ASSEMBLY

- NOTES
- UNLESS OTHERWISE SPECIFIED AND/OR INDICATED:
DIMENSIONS ARE TO FACE OF VIEW SHOWN AND AUTOMATICALLY ROUNDED BY COMPUTER FOR INSPECTION (SEE MATH MODEL FOR PRECISE DIMENSIONS). FOR ALL OTHER DIMENSIONS NOT SHOWN BUT REQUIRED FOR TOOL BUILD, SEE MATH MODEL FOR PRECISE TOOL PATH DATA.
 - TERMINALS TO BE USED WITH 12065900 FUSE BLOCK OR EQUIVALENT.
 - TERMINAL ENGAGE 10N TO 35N WHEN MATED TO A 8 MM WIDE X 0.81 MM THICK HARDENED STEEL BLADE.
 - REFERENCE MATING COMPONENTS OR EQUIVALENT:
MAXI FUSE 12065938
 - NO SPECIAL PACKAGING REQUIRED.
 - RECOVERY NOTE - AFTER INSERTION INTO A 4.3 FUNCTIONAL GAGE, (5.25) TANG MUST RECOVER TO A MINIMUM OF 4.8.
 - TERMINAL FOR USE IN SEALED CAVITY REF CONN 12129380. USE CABLE SEAL 12129381.
 - TERMINAL FOR USE IN UNSEALED CAVITY REF CONN 12160893.
 - TERMINAL FOR USE IN SEALED CAVITY REF CONN 15336743. USE CABLE SEAL 15336703.
 - DO NOT PROBE, TEST OR OTHERWISE CONTACT THE INTERIOR REGION (THE SPRING OR ANY MOVING PART) OF THIS TERMINAL. SEVERE DAMAGE CAN OCCUR, COMPROMISING THE PERFORMANCE OF THE ELECTRICAL INTERFACE.
 - FOR TERMINALS PACKAGED & STORED IN THE APPROVED MANNER, TARNISH ON SILVER PLATED SURFACES WILL NOT AFFECT THE PERFORMANCE OF THE PART.
 - RETENTION FORCE SPRING TO BODY IN WITHDRAWAL DIRECT MINIMUM 185N. REFER TO ESD# S1042801 FOR PULL TEST GEOMETRY.

ASM PART NO	REV	N/P	DESCRIPTION	SPRING PART NO	TERMINAL PART NO	N MAX	APPLICATION
15336748	A7	-	5 MM ² SEALED TERMINAL	12065905	15336629	7.3	NOTE 9
12146942	A3	-	8 MM ² CRIMPED TERMINAL	12065905	12146941	7	NOTE 8
12129414	A7	-	8 MM ² SEALED TERMINAL	12065905	12129383	7.3	NOTE 7
12110128	A9	-	TWO 2 MM ² CRIMPED TERMINAL	12065905	12110126	6	NOTE 2
12110127	A7	-	5 MM ² CRIMPED TERMINAL	12065905	12110125	6	NOTE 2
12092445	B7	-	TWO 5 MM ² CRIMPED TERMINAL	12065905	12092443	6	NOTE 2
12092444	A12	-	TWO 3 MM ² CRIMPED TERMINAL	12065905	12092442	6	NOTE 2
12065921	A10	-	TWO 5 MM ² CRIMPED TERMINAL	12065905	12065913	4	NOTE 2
12065920	A10	-	TWO 3 MM ² CRIMPED TERMINAL	12065905	12065912	4	NOTE 2
12065919	A10	-	TWO 2 MM ² CRIMPED TERMINAL	12065905	12065911	4	NOTE 2
12065918	BB	-	TWO 1 MM ² CRIMPED TERMINAL	12065905	12065910	4	NOTE 2
12065917	A10	-	5 MM ² CRIMPED TERMINAL	12065905	12065909	4	NOTE 2
12065916	BB	-	3-2 MM ² CRIMPED TERMINAL	12065905	12065908	4	NOTE 2
12065915	BB	-	1-0.8 MM ² CRIMPED TERMINAL	12065905	12065907	4	NOTE 2

LINE DRAWN THROUGH PART NUMBER INDICATES THAT PHYSICAL PARTS ARE NOT AVAILABLE FOR ORDERING.
PART NUMBERS THAT DO NOT HAVE A LINE PRESENT INDICATE THAT PHYSICAL PARTS ARE AVAILABLE FOR ORDERING.
CONTACT DELPHI SALES TO ASSURE AVAILABILITY OF PARTS.

DWG TYPE: PART DRAWING

UNLESS OTHERWISE SPECIFIED
THIS DOCUMENT IS IN ACCORDANCE WITH ASME Y14.5M-1994 AS MODIFIED BY THE 3D DIMENSIONING AND TOLERANCING ADDENDUM-2001. SEPARATE PATTERNS OF FEATURES MAY BE SHOWN SEPARATELY, IRRESPECTIVE OF DATUM REFERENCES.

ALL DIMENSIONS ARE IN MILLIMETERS

PROCESS SENSITIVE DIMENSION

THIRD ANGLE PROJECTION

DO NOT SCALE USE MATH DATA

DELPHI
DELPHI PACKARD ELECTRICAL/ELECTRONIC ARCHITECTURE
WARREN, OH
COPYRIGHT 1985 DELPHI CORPORATION AND/OR ITS AFFILIATES. ALL RIGHTS RESERVED.
THIS DRAWING IS THE PROPERTY OF DELPHI CORPORATION AND CONTAINS DELPHI CONFIDENTIAL INFORMATION. THE REPRODUCTION, DISTRIBUTION AND UTILIZATION OF THIS DOCUMENT OR ITS CONTENTS TO OTHERS, WITHOUT EXPRESS AUTHORIZATION, IS PROHIBITED.

DATE: 01-JUL-16 Time: 18:28

OR: JAY H. GARRETSON, R. GLEASON, D. BRANTINGHAM, R. PETROSKY

SUBSTANCES OF CONCERN AND RECYCLED CONTENT PER DELPHI 19949001

DRAWING NUMBER: TAXI ASM TERM F M/P 800

12065914

SIZE: A0 SCALE: 5:1 FRAME NO: 1 OF 1 SHEET NO: 1 OF 2 STG: R N/P: 11