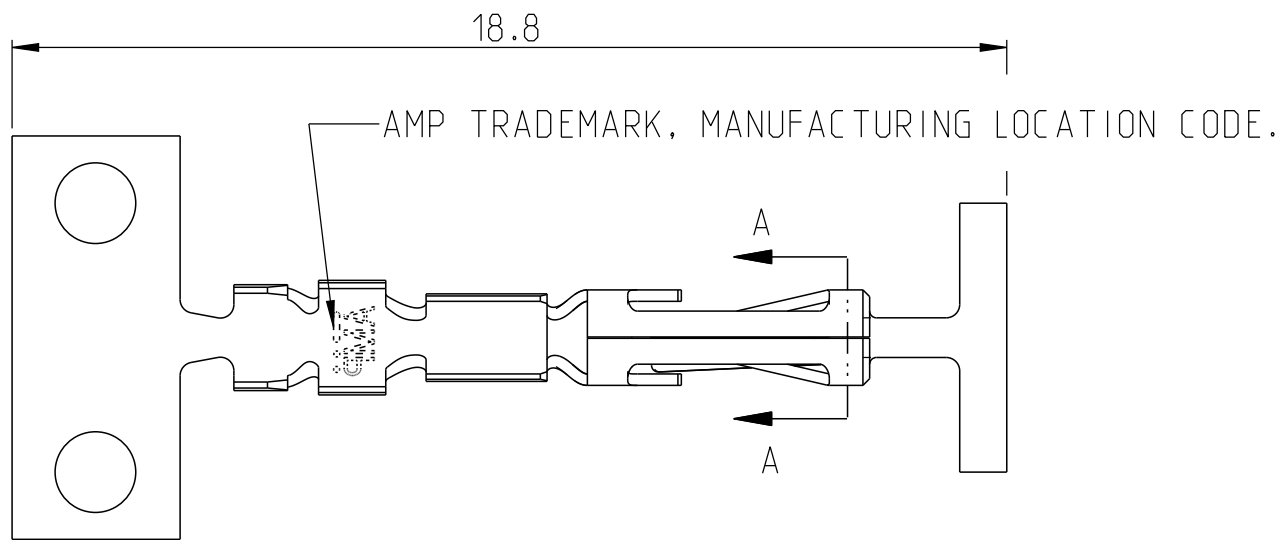
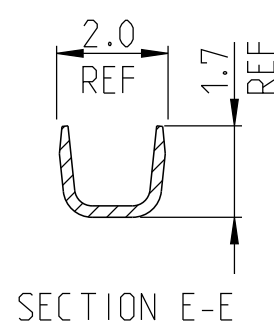
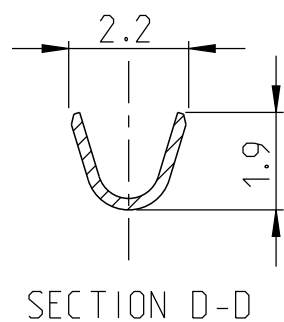
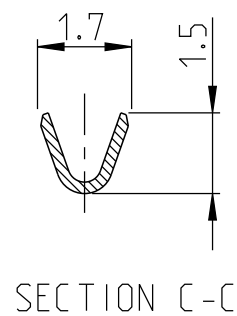
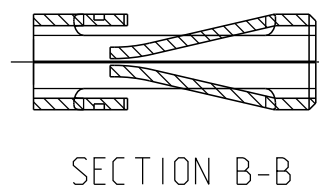
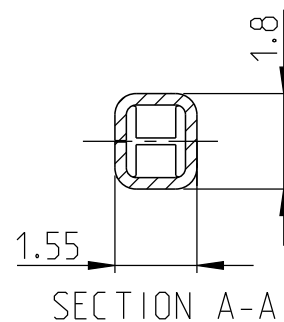
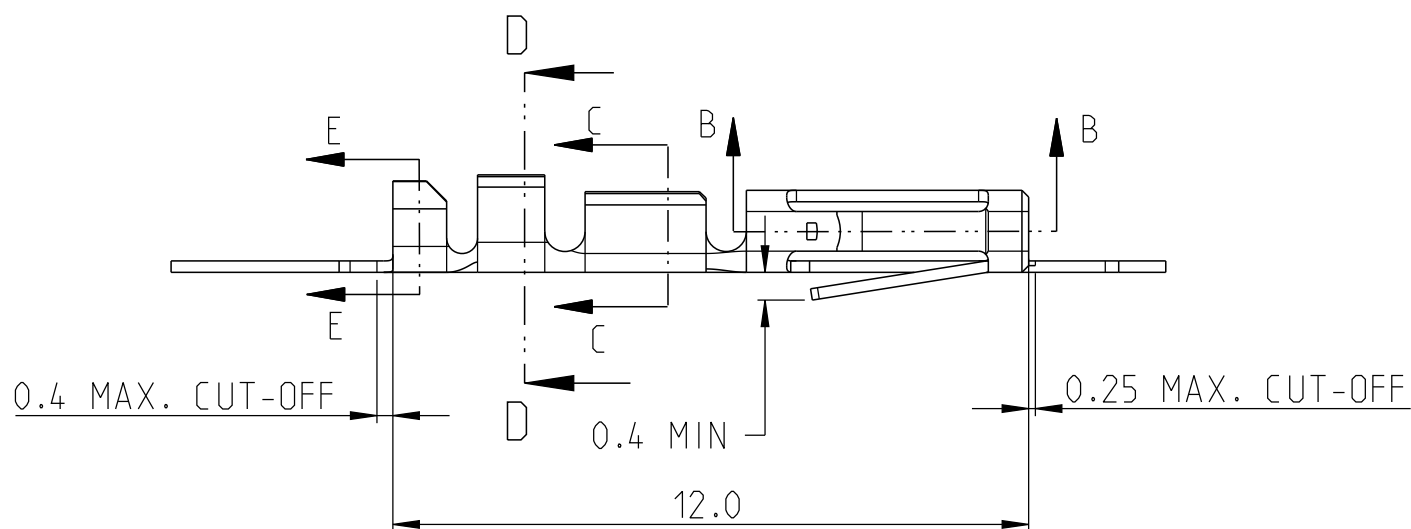


P	LTR	DESCRIPTION	DATE	DWN	APVD
	AN1	REVISED PER ECO-11-005140	31MAR2011	RK	-
	AP	STANDARDIZATION OF PLATING AND SPLICING	26JUL2024	GVP	KJK



NOTE:

- MATERIAL : PHOSPHOR BRONZE.
- FINISH : GOLD PLATED 0.4 μm IN CONTACT AREA AND GOLD FLASH ON REMAINDER EXCEPT CUTTING EDGES (GOLD FLASH IS NOT MANDATORY ON THE PILOTED CARRIER STRIP) OVER 1.3 μm NICKEL.
- FINISH : GOLD PLATED 0.4 μm IN CONTACT AREA AND GOLD FLASH ON REMAINDER (GOLD FLASH IS NOT MANDATORY ON THE PILOTED CARRIER STRIP) OVER 1.3 μm NICKEL.
- FINISH : GOLD PLATED 0.4 μm IN CONTACT AREA, OVER 1.3 μm NICKEL.
- FINISH : GOLD PLATED 0.8 μm IN CONTACT AREA AND GOLD FLASH ON REMAINDER EXCEPT CUTTING EDGES (GOLD FLASH IS NOT MANDATORY ON THE PILOTED CARRIER STRIP) OVER 1.3 μm NICKEL.
- FINISH : GOLD PLATED 0.8 μm IN CONTACT AREA AND GOLD FLASH ON REMAINDER (GOLD FLASH IS NOT MANDATORY ON THE PILOTED CARRIER STRIP) OVER 1.3 μm NICKEL.
- FINISH : TIN PLATED 0.8 μm ALL OVER EXCEPT FOR CUTTING EDGES.
- FOR MINI-APPLICATOR P/N 781119-2.
- FOR STD. APPLICATOR.
- FOR HANDTOOL P/N 784044-1.
- OBSOLETE
- SPLICING - MAXIMUM 1 LOOSE END PER REEL IS ALLOWED



NOTES 1&7	*181270-6	0	-	-	280530-6	AP
NOTES 1&6	-	-	-	-	280530-5	AP
NOTES 1&5	181270-4	AP	1-280530-4	AP	280530-4	AP
NOTES 1&4	181270-3	AP	1-280530-3	AP	280530-3	AP
NOTES 1&3	181270-2	AP	1-280530-2	AP	280530-2	AP
NOTES 1&2	181270-1	AP	1-280530-1	AP	280530-1	AP
MATL. & FINISH	LOOSE-PIECE PART NUMBER: REV NOTE 10	REV	STRIP PART NUMBER: NOTE 9	REV	STRIP PART NUMBER: NOTE 8	REV

THIS DRAWING IS A CONTROLLED DOCUMENT.

DWN G.CAMPIA 30JUNE1989

**STE** TE Connectivity

DIMENSIONS:	TOLERANCES UNLESS OTHERWISE SPECIFIED:
mm	
0 PLC	±
1 PLC	±0.3
2 PLC	±
3 PLC	±
4 PLC	±
ANGLES	±
MATERIAL	FINISH
SEE TABLE	SEE TABLE

CHK	-
APVD	-
PRODUCT SPEC	108-20025
APPLICATION SPEC	114-20004
WEIGHT	-
CUSTOMER DRAWING	

NAME AMP MODU II REC. CONTACT, STD PRESSURE, C.O.S.I.			
SIZE	CAGE CODE	DRAWING NO	RESTRICTED TO
A3	00779	©=280530	-
SCALE	SHEET	OF	REV
7:1	1	1	AP