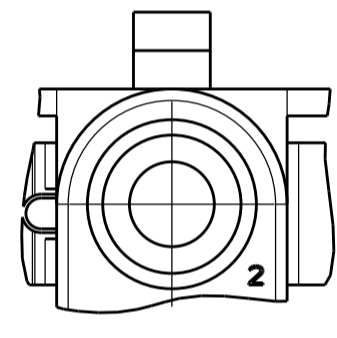
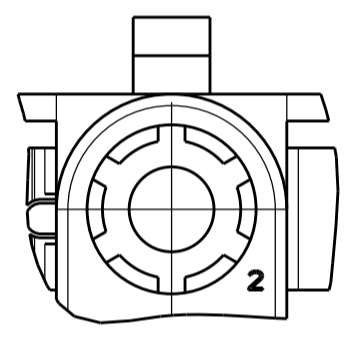


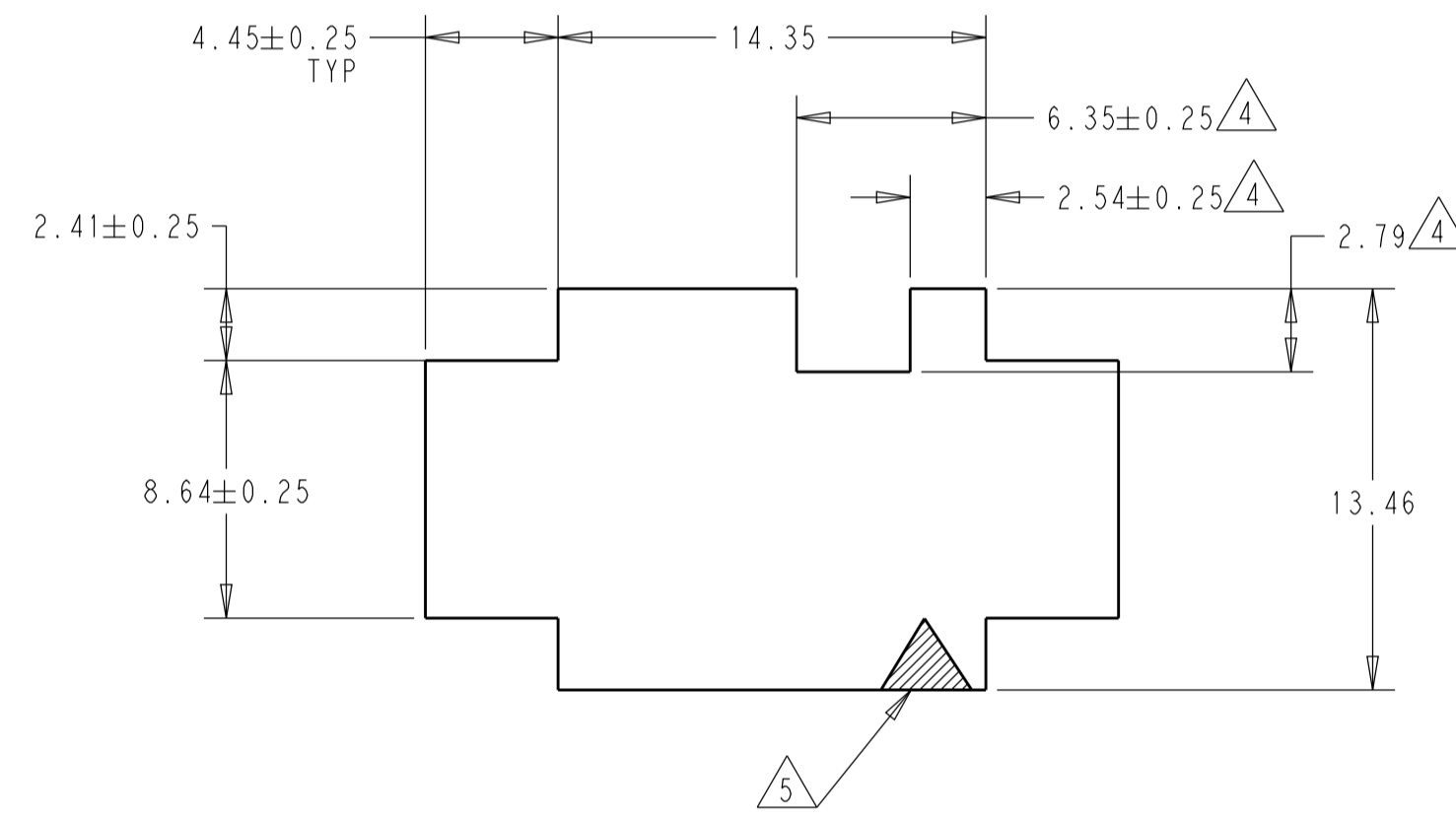
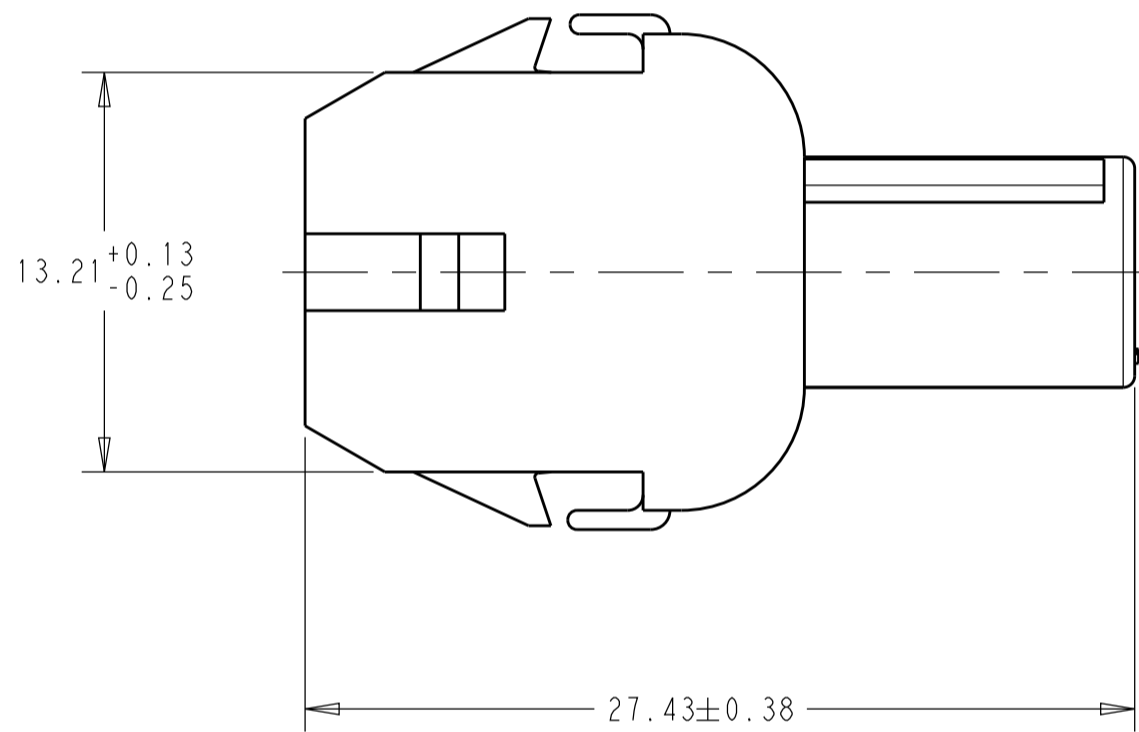
CONSTRUCTION OPTION 1



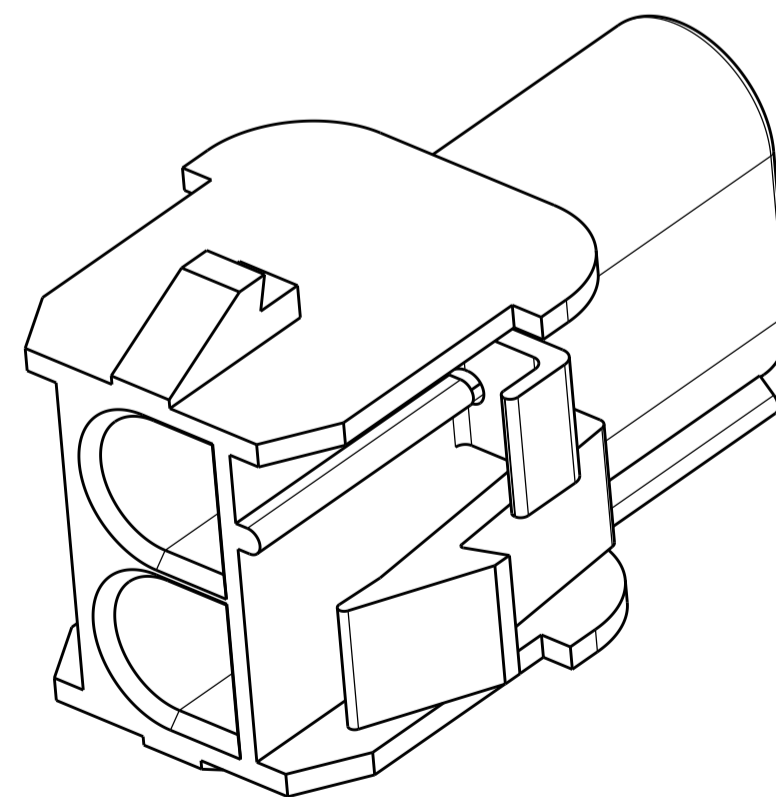
CONSTRUCTION OPTION 2

CONSTRUCTION OPTION 3

DETAIL A
OPTIONAL CONSTRUCTIONS



RECOMMENDED PANEL CUTOUT



REVISIONS				
#	LTN	DESCRIPTION	DATE	OWN APVD
AG9		REDRAWN PER ECO-19-005708	02MAY2019	BKW SF

1. MATES WITH APPROPRIATE UNIVERSAL MATE-N-LOCK™ PLUG
2. RECOMMENDED PANEL THICKNESS 0.76 - 2.29.
3. PANEL MUST BE PUNCHED SO THAT THE HOUSING ENTERS THE PANEL IN THE SAME DIRECTION AS THE PUNCH.
4. OPTIONAL FOR KEYING HOUSING IN PANEL.
5. CIRCUIT NUMBER 1 LOCATION.
6. DIMENSIONS SHOWN REPRESENT PRODUCT IN DRY, AS MOLDED, CONDITION. ADDITIONAL 2% GROWTH DUE TO SUBSEQUENT MOISTURE ABSORPTION MAY OCCUR AND SHOULD BE ACCOUNTED FOR.
7. FOUR RIBS EQUALLY SPACED, NO SPECIFIC ORIENTATION. NO RIBS OR SIX RIBS EQUALLY SPACED, NO SPECIFIC ORIENTATION, OPTIONAL.
8. UNDERWRITERS RECOGNIZED COMPONENT LOGO AND CSA CERTIFICATION LOGO TO BE LOCATED ONCE EACH ON SIDE OF HOUSING.
9. OBSOLETE PARTS: OBSOLETE CIS STREAMLINING PER D.RENAUD/D.SINISI
10. CONSTRUCTION OPTION 1 ONLY ALLOWED
CONSTRUCTION OPTIONS 2 AND 3 NOT PERMISSIBLE
11. PREPRODUCTION-FASR REQUIRED
12. MATERIAL: PA66, UL94 V-0, GWIT 775°C
13. TRADEMARK LOCATION: AMP OR TE

12	NATURAL	13-480699-0
10	NATURAL	2-480699-0
	BLACK	1-480699-9
	GRAY	1-480699-8
	BLUE	1-480699-6
	GREEN	1-480699-5
9	SUPERSEDED BY 1-480699-0	YELLOW
9	OBSOLETE	ORANGE
		RED
		BROWN
		NATURAL
		COLOR
		PART NUMBER

THIS DRAWING IS A CONTROLLED DOCUMENT.		OWN B. WEAVER 02MAY2019	TE Connectivity	
DIMENSIONS:		CHK S. FERNANDES 02MAY2019	NAME CAP, 2 CIRCUIT UNIVERSAL MATE-N-LOCK	
mm	TOLERANCES UNLESS OTHERWISE SPECIFIED:	APVD T. BENCHOFF 02MAY2019	PRODUCT SPEC	
	0 PLC ±		APPLICATION SPEC	
	1 PLC ±		SIZE CAGE CODE DRAWING NO	
	2 PLC ±0.13		RESTRICTED TO	
	3 PLC ±		A 00779 C=480699	
	4 PLC ±		SCALE 4:1 SHEET 1 OF 1 REV AG9	
	ANGLES ±1°		CUSTOMER DRAWING	
MATERIAL NYLON UL94V-2	FINISH	WEIGHT		